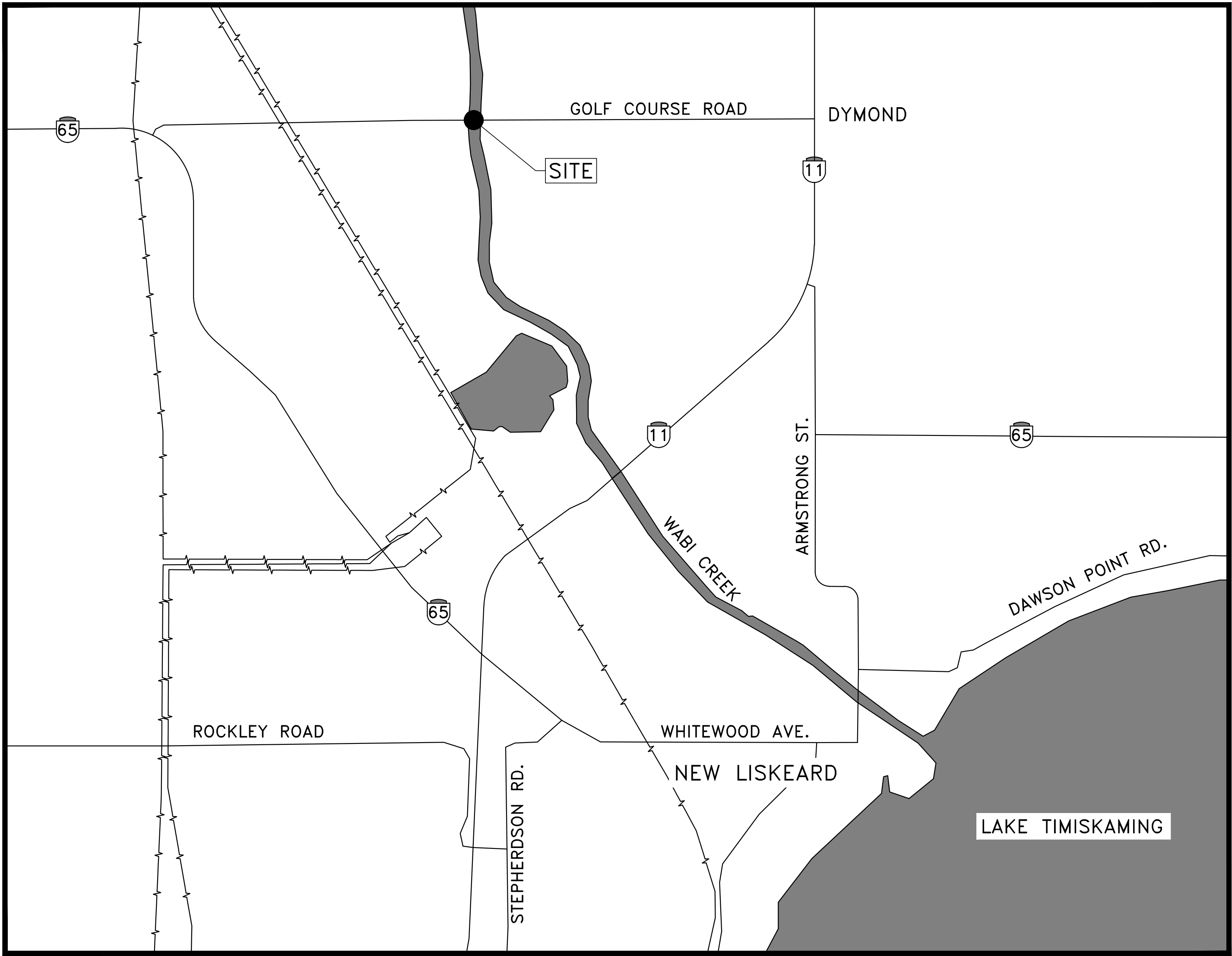


REHABILITATION OF GOLF COURSE ROAD BRIDGE

CITY OF TEMISKAMING SHORES
CONTRACT # PW-RFT-001-2026



| SHEET LIST TABLE | |
|------------------|---|
| SHEET NUMBER | SHEET TITLE |
| 01 | GENERAL ARRANGEMENT |
| 02 | SITE PLAN |
| 03 | TRAFFIC STAGING PLAN |
| 04 | CONSTRUCTION STAGING |
| 05 | REMOVALS |
| 06 | NEW CONSTRUCTION |
| 07 | STRIP SEAL EXPANSION JOINT TYPE 'C' DETAILS |
| 08 | EXPANSION JOINT DRAINAGE SYSTEM, CATCH BASIN AND DOWNPIPE |
| 09 | RAILING FOR BARRIER WALL DETAILS |
| 10 | STRIP SEAL EXPANSION JOINT ASSEMBLY |
| 11 | SEQUENCE OF EXPANSION JOINT INSTALLATION |
| 12 | TYPICAL DEATILS |

NOTES:

1. THIS DRAWING SHALL BE READ IN CONJUNCTION WITH ALL OTHER APPLICABLE CONTRACT DRAWINGS.

LEGEND:

- FULL DEPTH ASPHALT REMOVAL
ON CONCRETE SURFACES
- PARTIAL DEPTH ASPHALT
REMOVAL (AS NOTED)

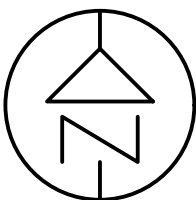
LEGEND:

- 40mm SURFACE COURSE ASPHALT
40mm BASE COURSE ASPHALT
10mm WATERPROOFING
- 40mm SURFACE COURSE ASPHALT

METRIC

DIMENSIONS ARE IN METRES AND/OR
MILLIMETRES UNLESS OTHERWISE SHOWN
DRAWING NOT TO BE SCALED
100mm ON ORIGINAL DRAWING

CITY OF
TEMISKAMING SHORES

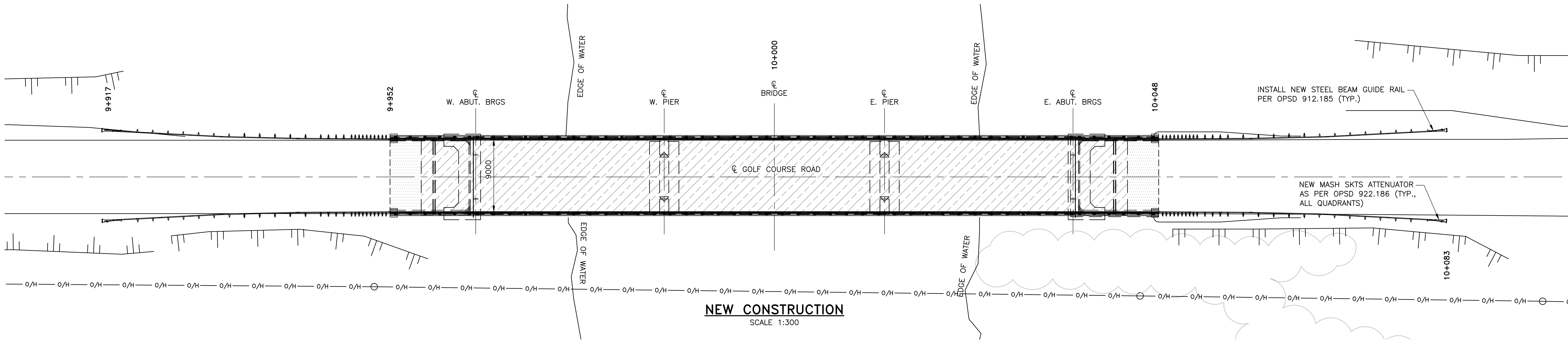
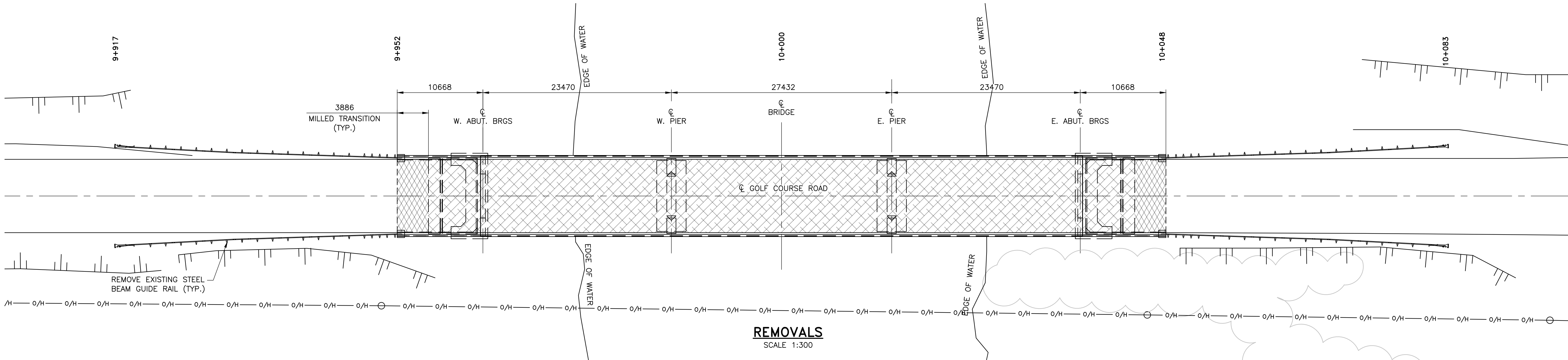


GOLF COURSE ROAD BRIDGE
REHABILITATION
SITE PLAN

SHEET
02



D.M. Wills Associates Limited
130 Jameson Drive
Pelletborough, Ontario
Canada, K9J 0B9
P. 705.742.2297
F. 705.748.9944
E. wills@dmwills.com

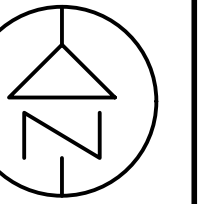


| | | | | | | | |
|-----------|----------|-----|-------------|----------|-----------------|----------------|-------------------|
| REVISIONS | - | - | | | | | - |
| | - | - | | | | | - |
| | - | - | | | | | - |
| | 12/22/25 | MV | | | | | ISSUED FOR TENDER |
| | DATE | BY | DESCRIPTION | | | | |
| DESIGN | TR CHK | --- | CODE | CHBDC-19 | LOAD CL-625-ONT | DATE NOV. 2025 | |
| DRAWN | JAH CHK | TR | SITE | 06 | | DWG S02 | |

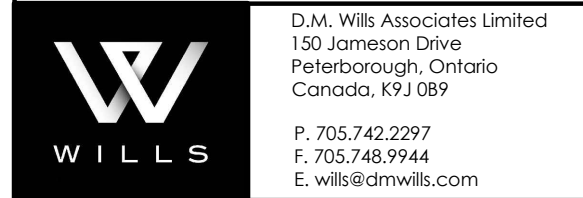
1. THIS DRAWING SHALL BE READ IN CONJUNCTION WITH ALL OTHER APPLICABLE CONTRACT DRAWINGS.



CITY OF
TEMISKAMING SHORES

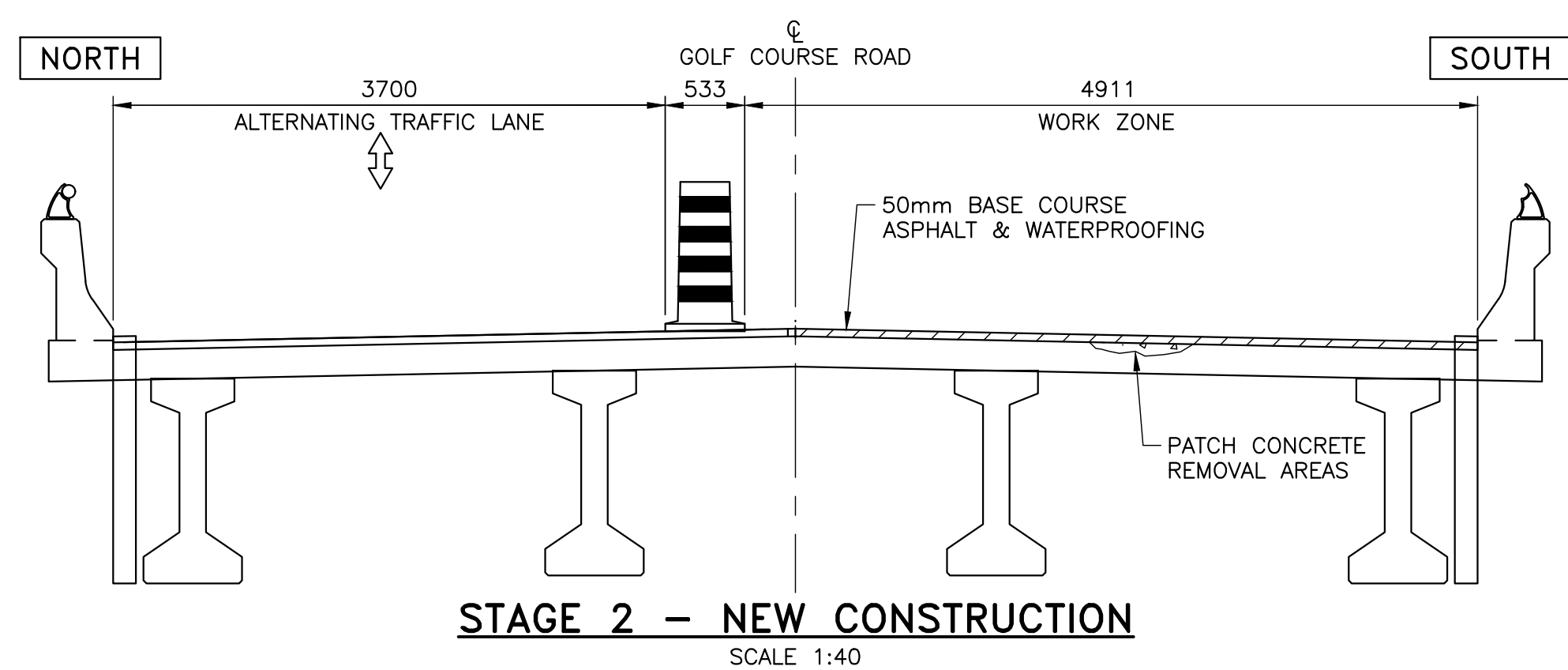
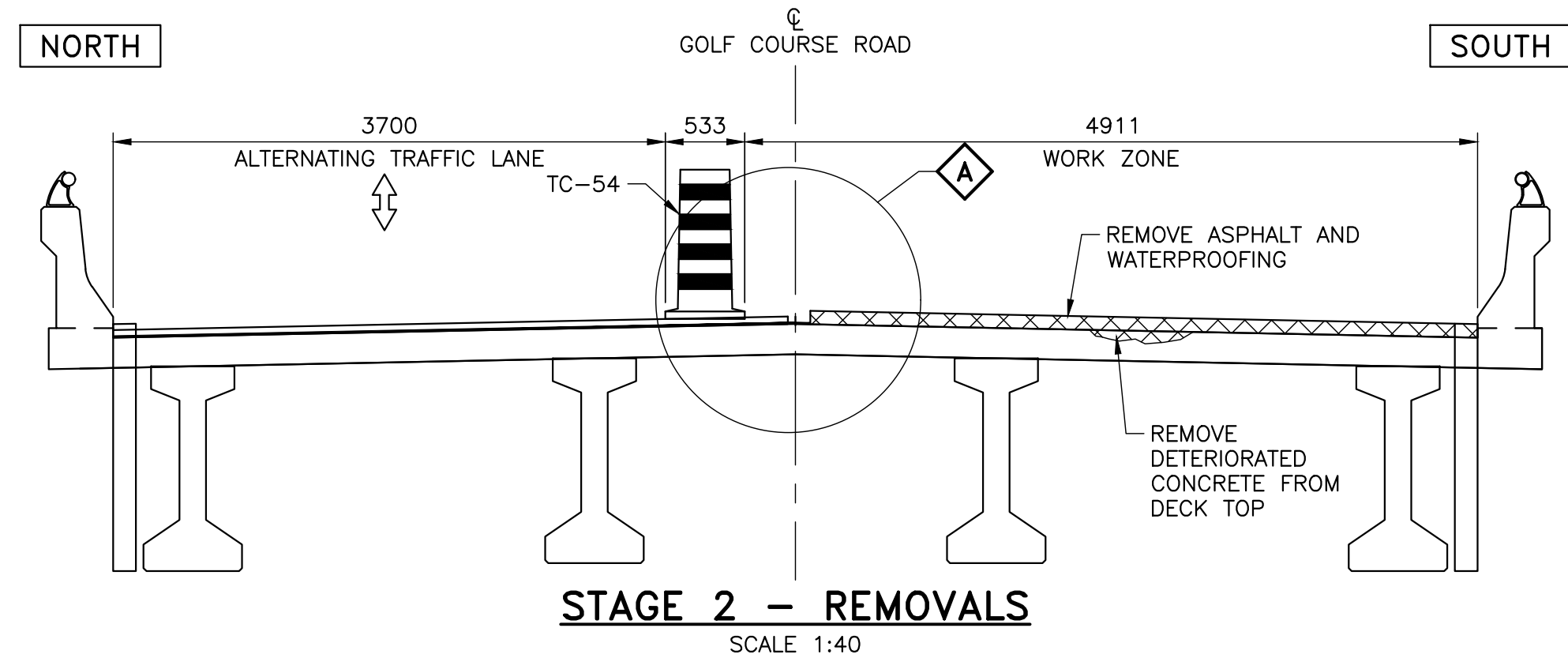
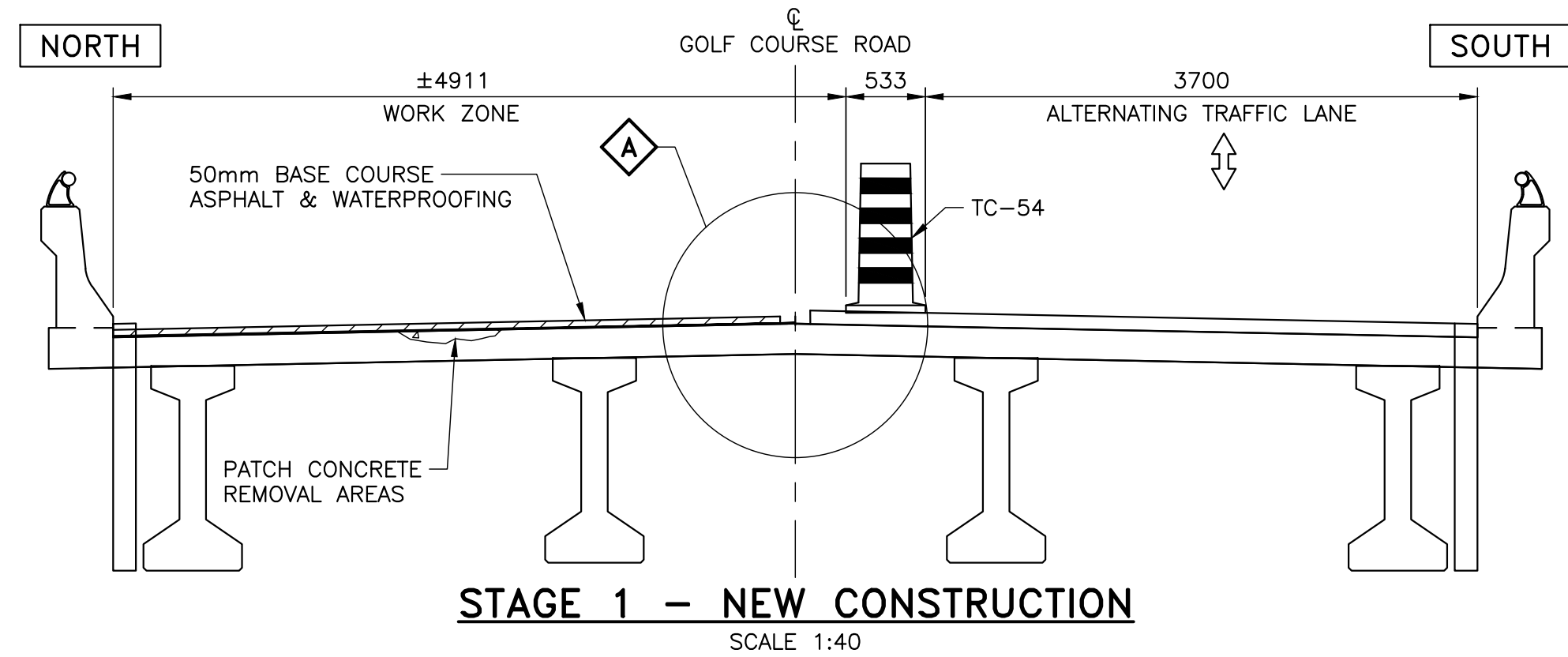
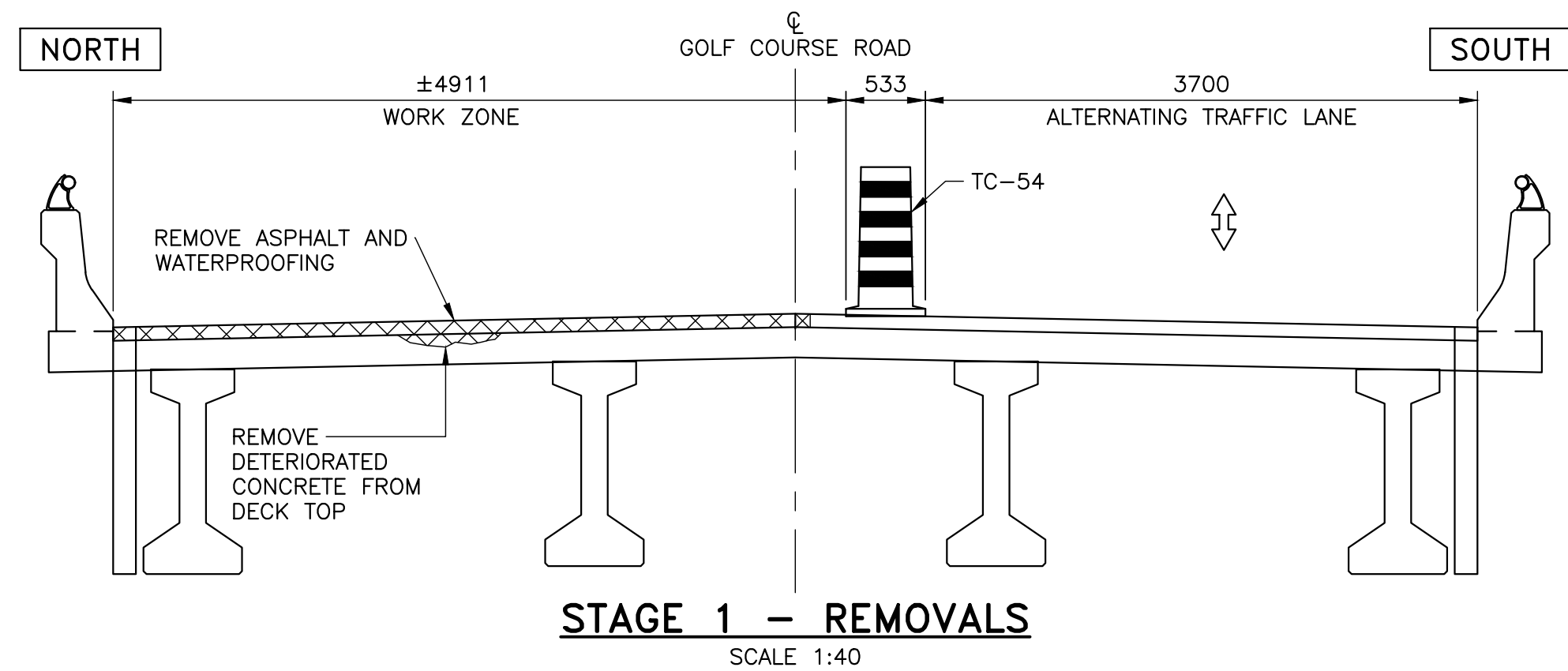


SHEET
03



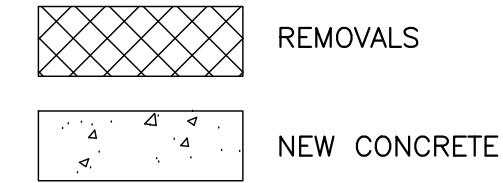
STAGE 2
SCALE 1:400

| | | | | | | | |
|-----------|----------|-----|------|------|----------|-------------------|----------------|
| REVISIONS | - | - | - | - | - | - | - |
| | - | - | - | - | - | - | - |
| | - | - | - | - | - | - | - |
| | - | - | - | - | - | - | - |
| | 12/22/25 | MV | | | | ISSUED FOR TENDER | |
| | DATE | BY | | | | DESCRIPTION | |
| DESIGN | T.R. | CHK | D.B. | CODE | CHBDC-19 | LOAD CL-625-ONT | DATE NOV. 2025 |
| DRAWN | T.R. | CHK | D.B. | SITE | 06 | | DWG S03 |



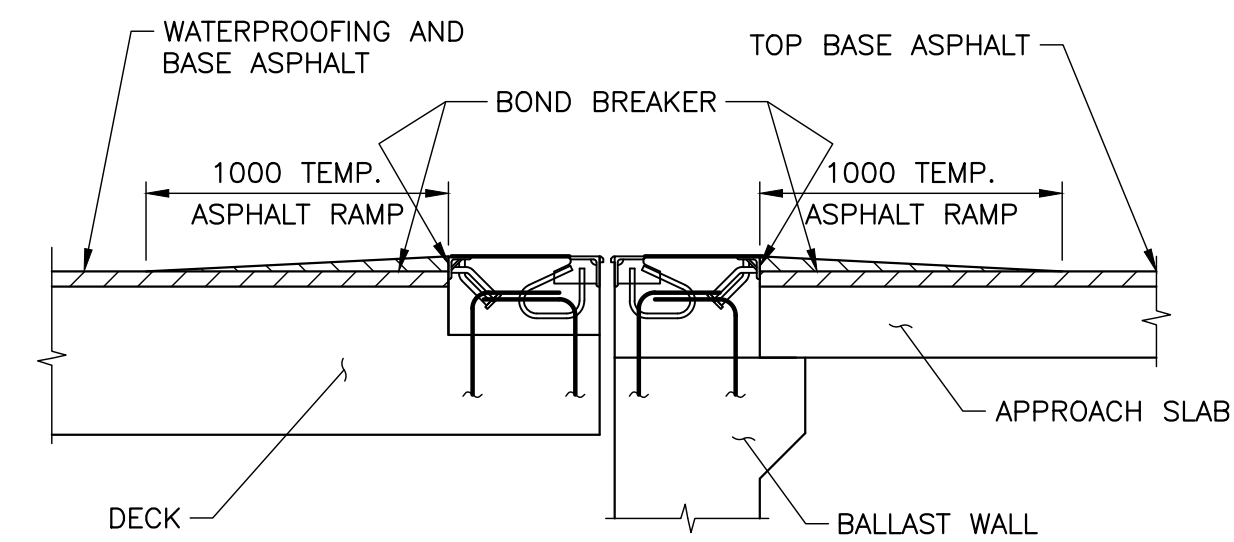
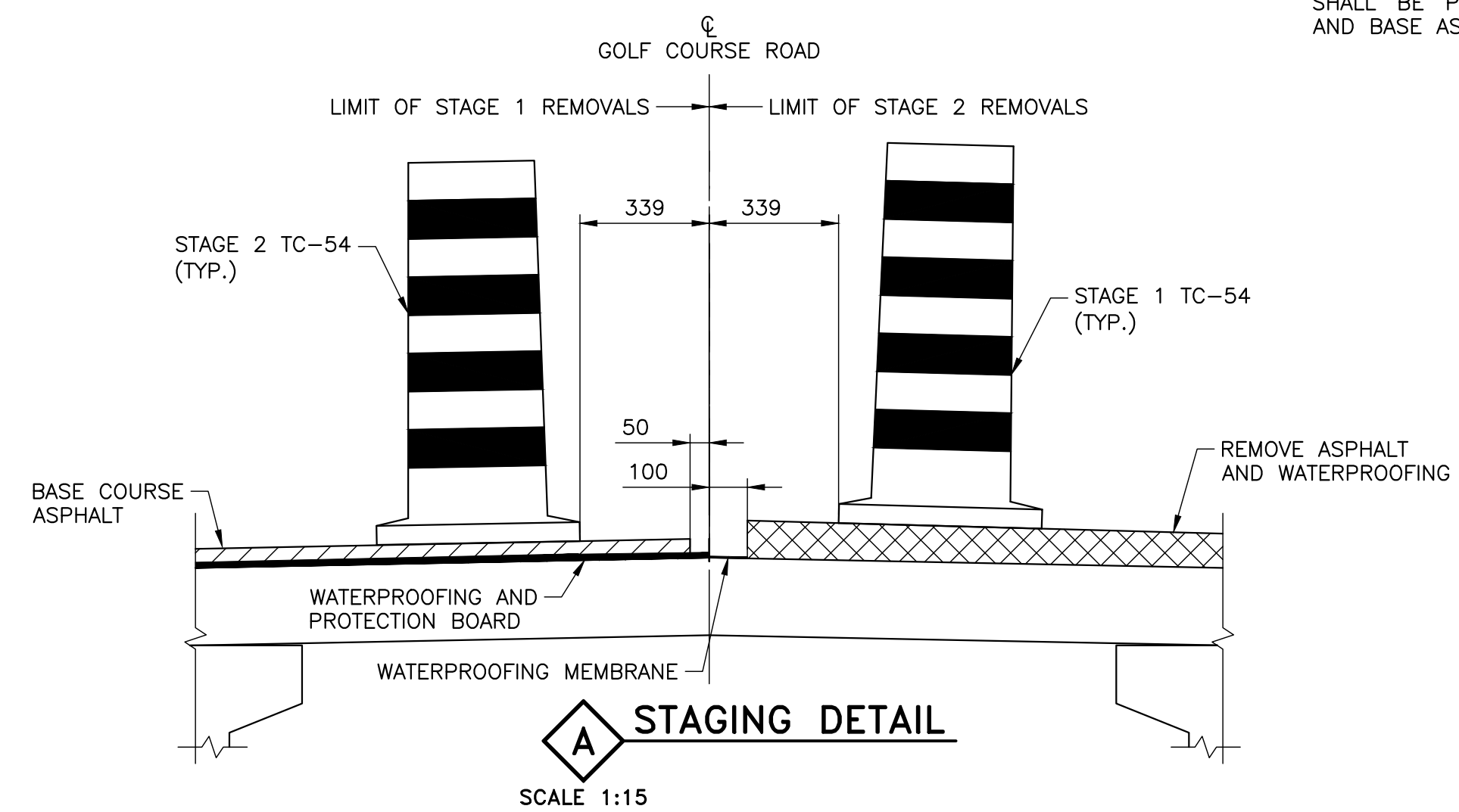
METRIC
DIMENSIONS ARE IN METRES AND/OR
MILLIMETRES UNLESS OTHERWISE SHOWN
DRAWING NOT TO BE SCALED
100mm ON ORIGINAL DRAWING

LEGEND:



NOTES:

1. THIS DRAWING SHALL BE READ IN CONJUNCTION WITH ALL OTHER APPLICABLE CONTRACT DRAWINGS.
2. FINAL MILL AND PAVE SURFACE ASPHALT TO BE COMPLETED UNDER FLAGGED OPERATION.
3. TEMPORARY ASPHALT RAMPS SHALL BE PLACED AGAINST EXPANSION JOINT END DAMS AFTER STAGE 1 AND STAGE 2 CONSTRUCTION. BOND BREAKER SHALL BE PLACED AT INTERFACE BETWEEN TEMPORARY ASPHALT RAMPS AND BASE ASPHALT AND END DAMS.



PAVING DETAIL - EXPANSION JOINT
SCALE N.T.S.
(NOTE 3)

| | | | | |
|-----------|----------|-----|-------------------|----------------|
| REVISIONS | - | - | - | - |
| | - | - | - | - |
| | - | - | - | - |
| | 12/22/25 | MV | ISSUED FOR TENDER | |
| DESIGN | T.R. | CHK | D.B. | CODE |
| DRAWN | T.R. | CHK | D.B. | SITE |
| CHBDC-19 | | | LOAD CL-625-ONT | DATE NOV. 2025 |
| 06 | | | DWG | S04 |

**CITY OF
TEMISKAMING SHORES**

**GOLF COURSE ROAD BRIDGE
REHABILITATION
CONSTRUCTION STAGING**

**SHEET
04**



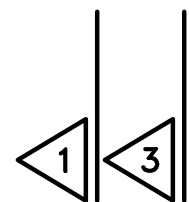
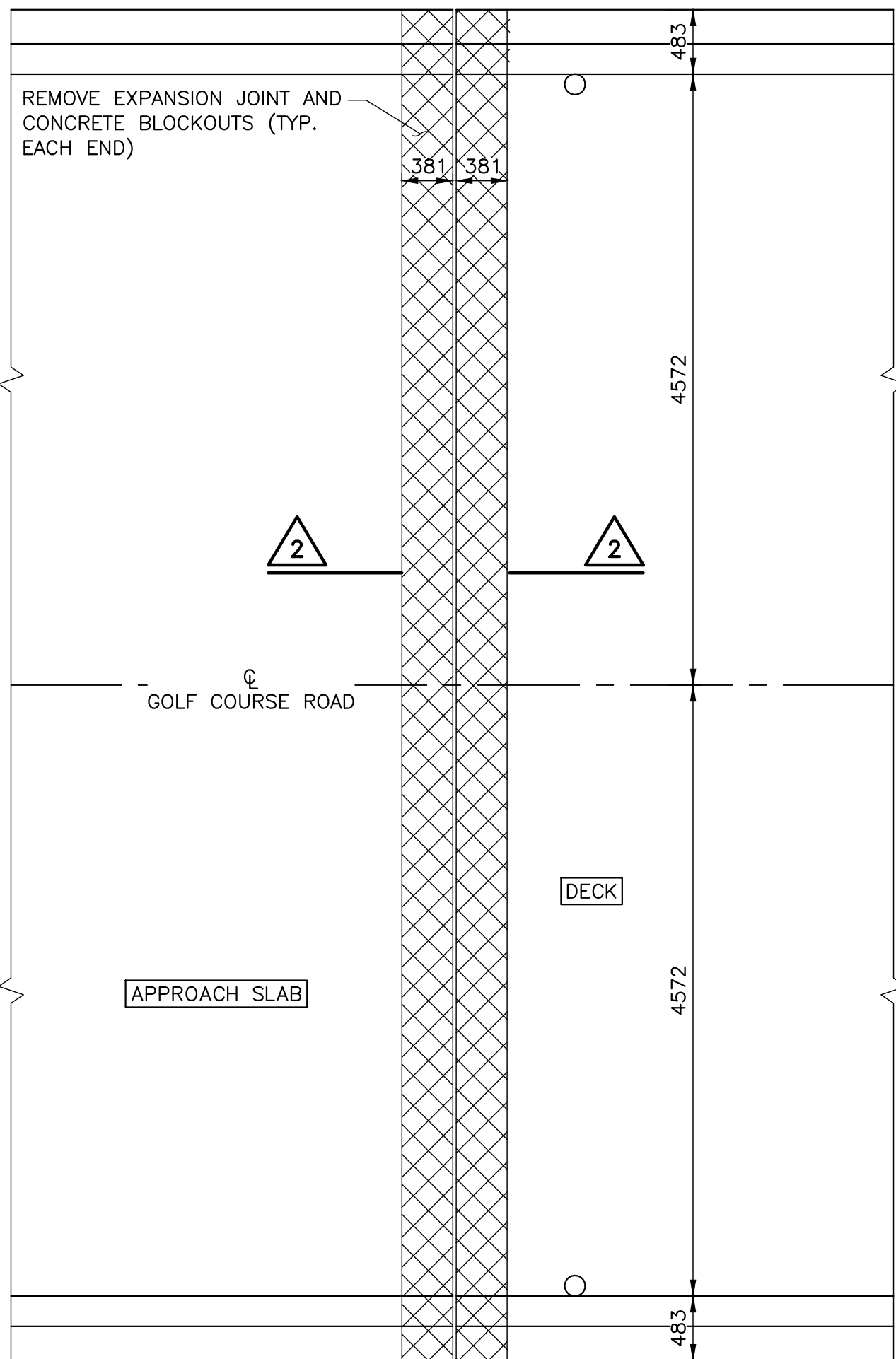
D.M. Wills Associates Limited
150 Jameson Drive
Pelletborough, Ontario
Canada, K9J 0B9
P. 705.742.2297
F. 705.748.9944
E. wills@dmwills.com

FILE NAME: Y:\9200 - 9299\9288 - Temiskaming - Golf Course Rd. Bridge\02 Drawings\Current Drawings\9288 - 04 - Removals - CCR Bridge.dwg
CREATED: 2025-12-19 12:46
MODIFIED: 2025-12-19 12:46

D.M. WILLS ASSOCIATES LIMITED

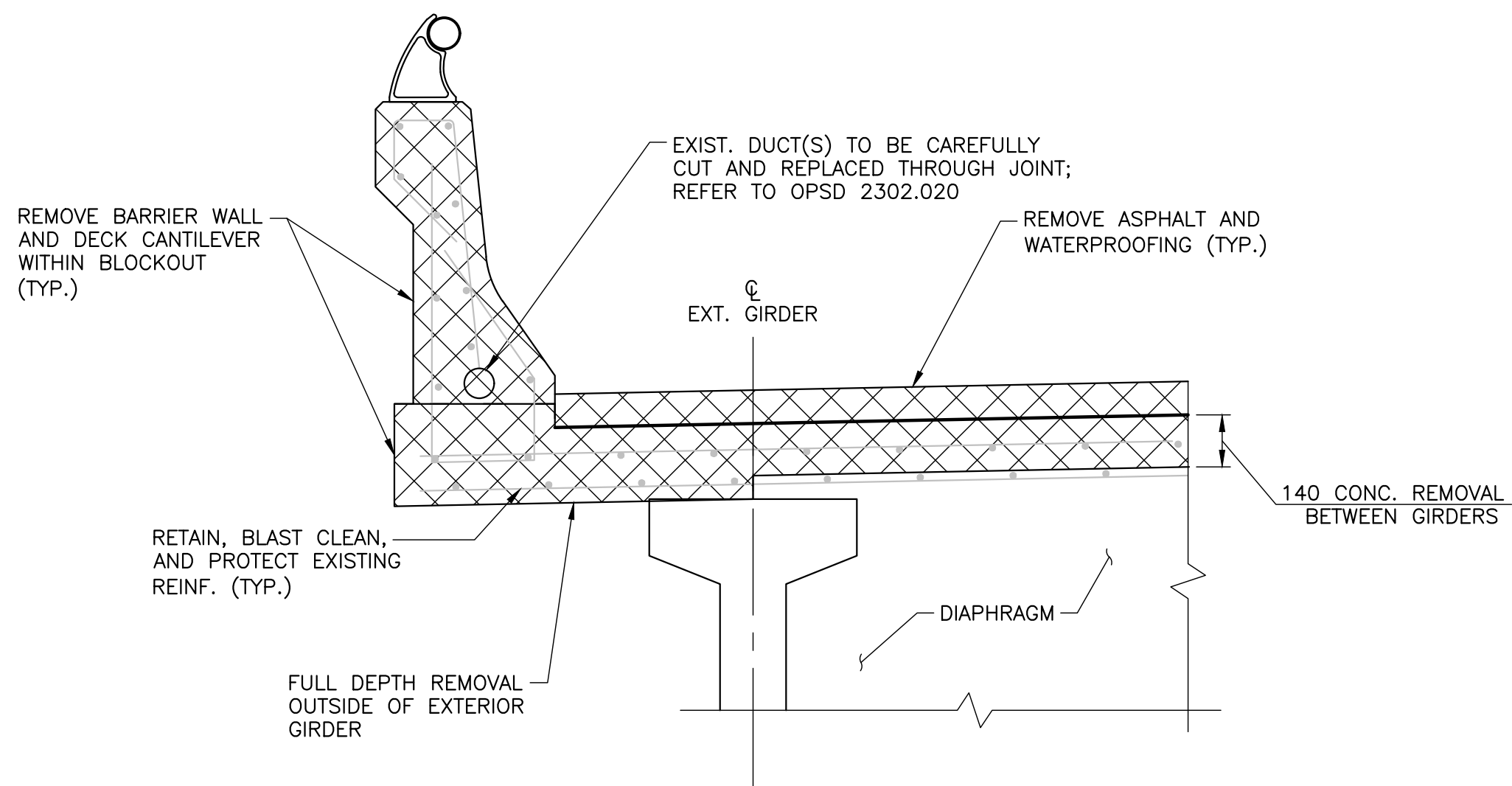
ANS-B

2019-11



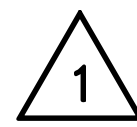
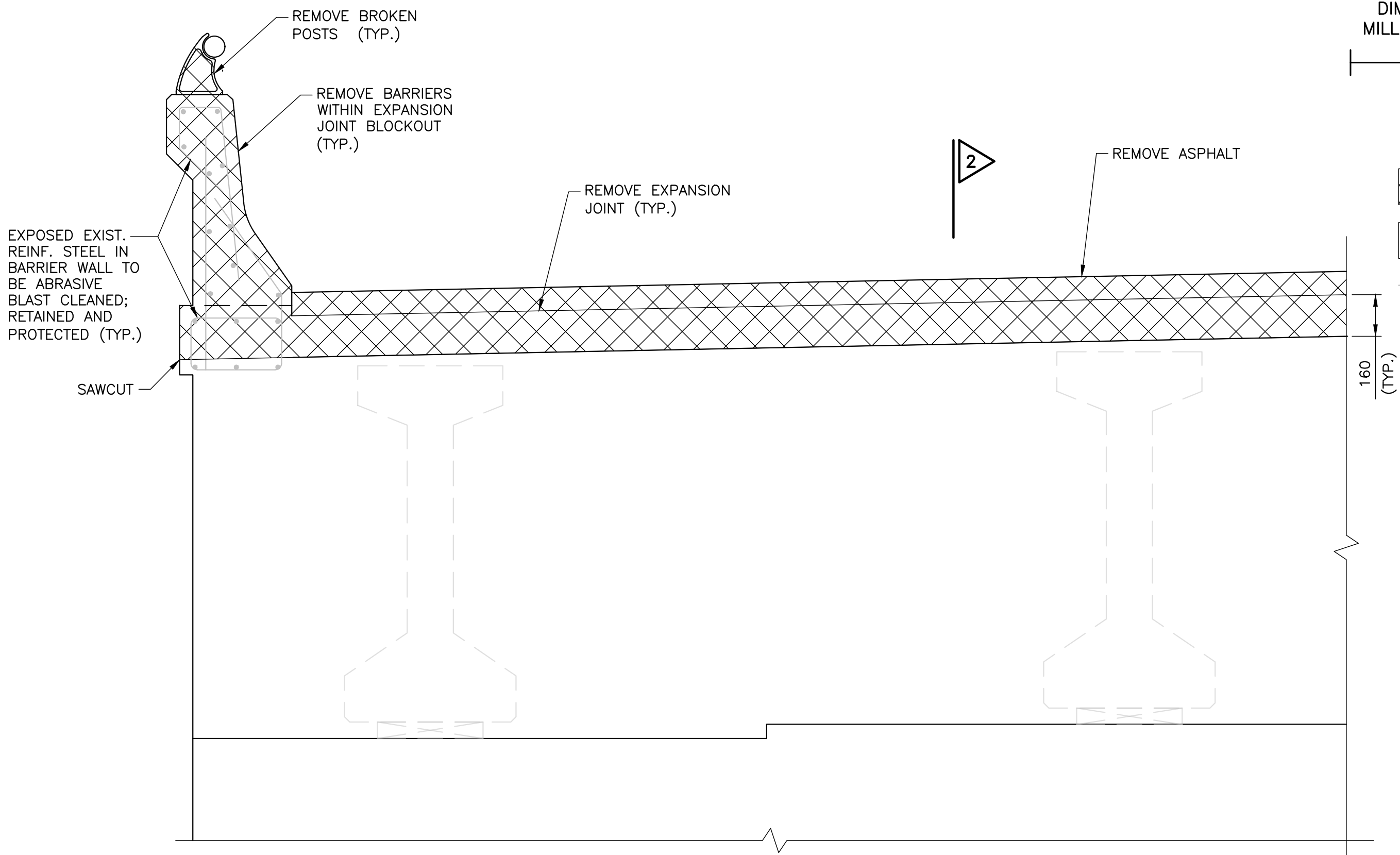
JOINT REMOVAL AT WEST ABUTMENT

(EAST ABUTMENT SIMILAR)
SCALE 1:40



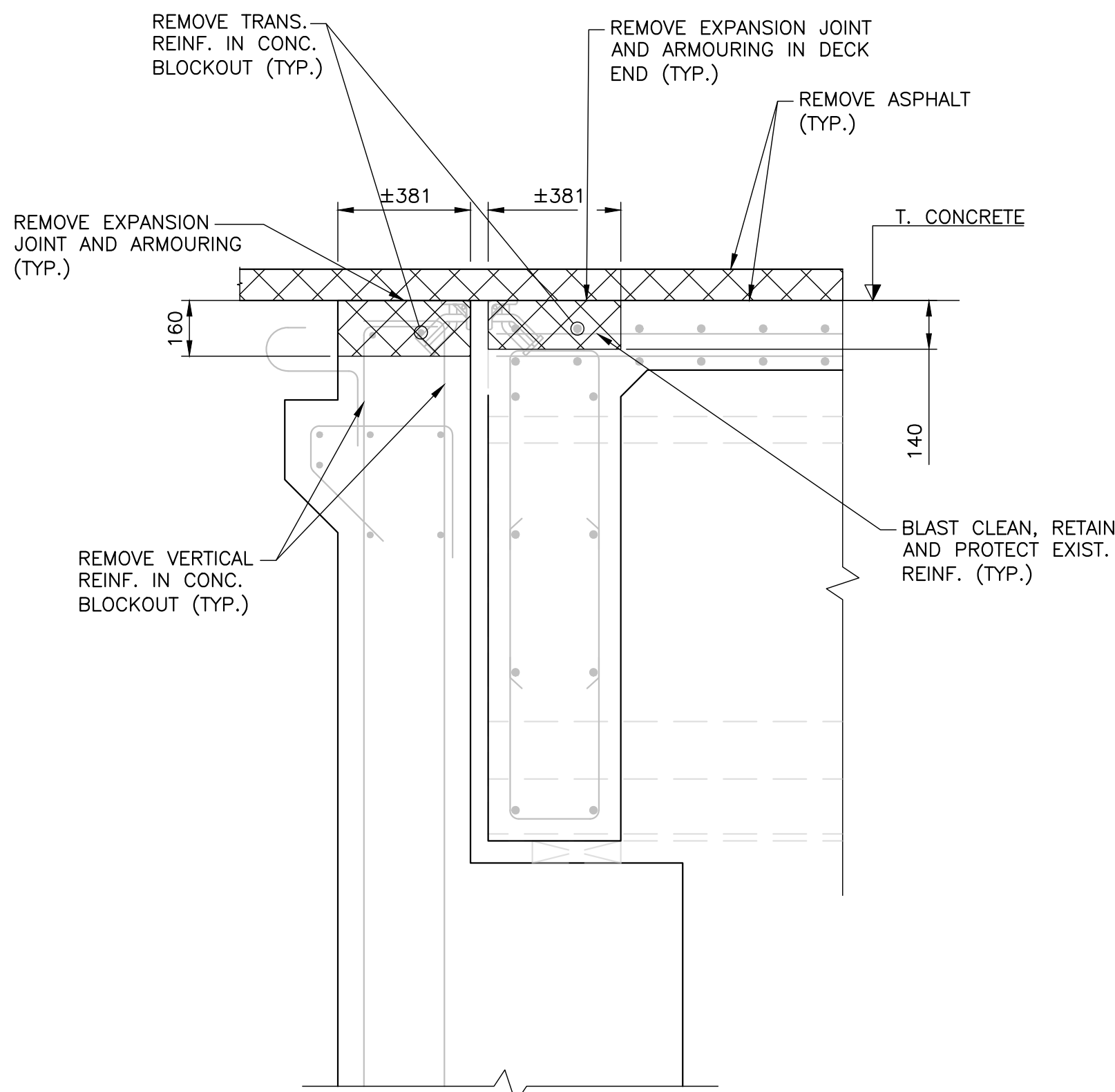
DECK OVERHANG

SCALE 1:15



ABUTMENT

SCALE 1:15



SCALE 1:15

METRIC
DIMENSIONS ARE IN METRES AND/OR MILLIMETRES UNLESS OTHERWISE SHOWN
DRAWING NOT TO BE SCALED
100mm ON ORIGINAL DRAWING

LEGEND:

- REMOVALS
- NEW CONCRETE
- EXIST. REINFORCEMENT

NOTES:

- THIS DRAWING SHALL BE READ IN CONJUNCTION WITH ALL OTHER APPLICABLE CONTRACT DRAWINGS.
- REMOVALS SHALL BE AS DIRECTED BY THE CONTRACT ADMINISTRATOR AND AS PER THE APPLICABLE DETAILS ON SHEET 12.

CITY OF
TEMISKAMING SHORES

GOLF COURSE ROAD BRIDGE
REHABILITATION
REMOVALS

SHEET
05



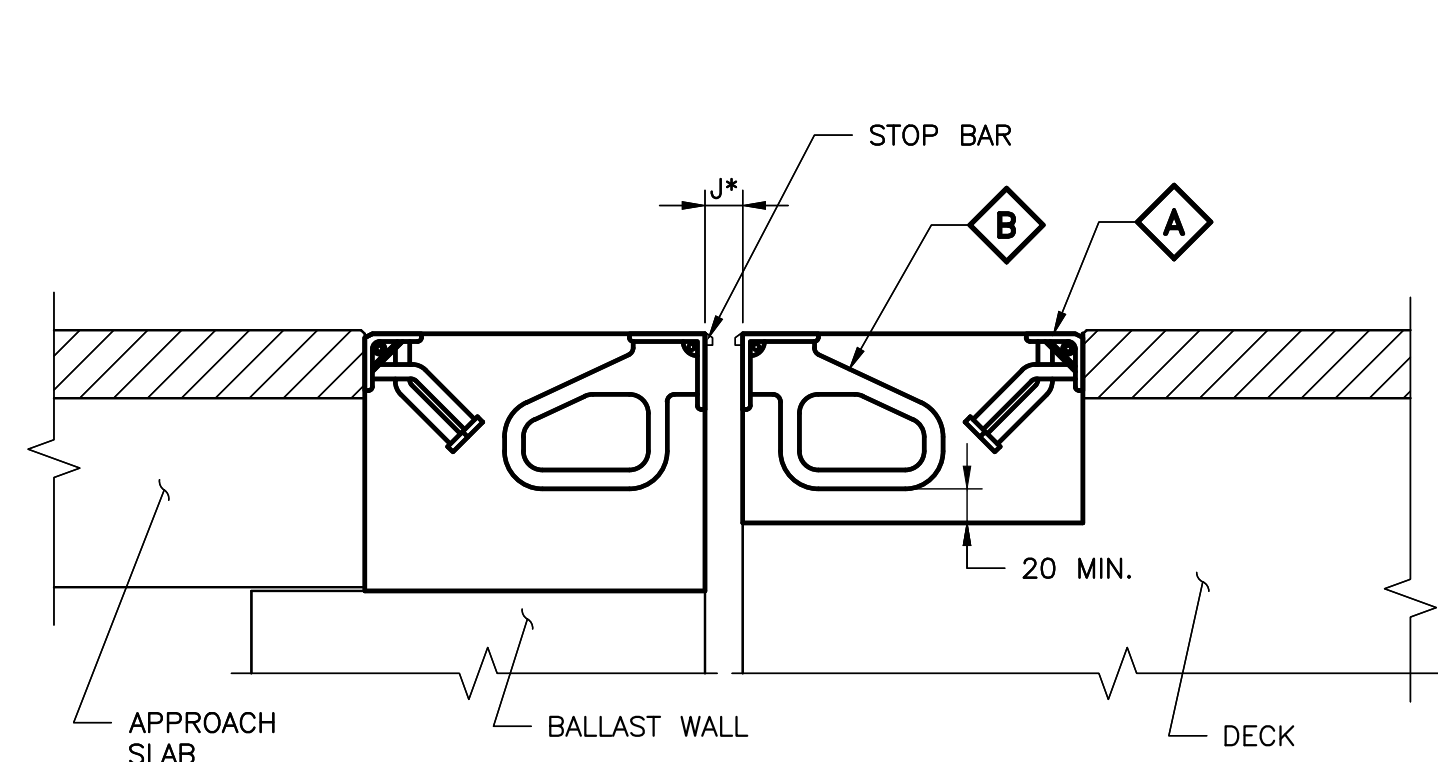
D.M. Wills Associates Limited
130 Jameson Drive
Pelletborough, Ontario
Canada, K9J 0B9
P. 705.742.2297
F. 705.748.9944
E. wills@dmwills.com

| REVISIONS | - | - | - | - |
|-----------|----------|-------------|-------------------|-----------------|
| | - | - | - | - |
| | - | - | - | - |
| | 12/22/25 | MV | ISSUED FOR TENDER | |
| DATE | BY | DESCRIPTION | | |
| DESIGN | T.R. CHK | D.B. CODE | CHBDC-19 | LOAD CL-625-ONT |
| DRAWN | T.R. CHK | D.B. SITE | 06 | DWG |
| | | | | NOV. 2025 |
| | | | | 505 |

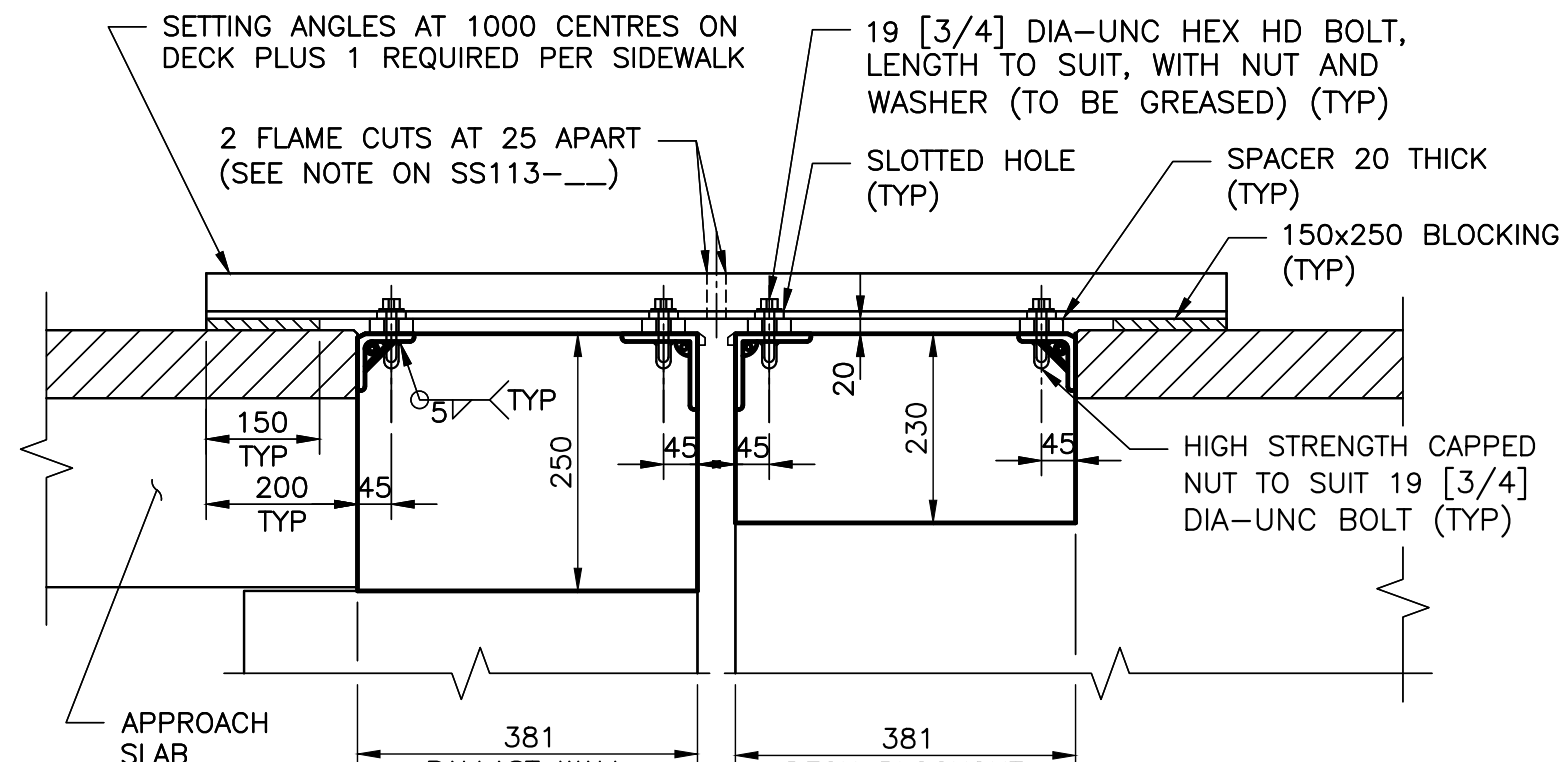


SHEET
06

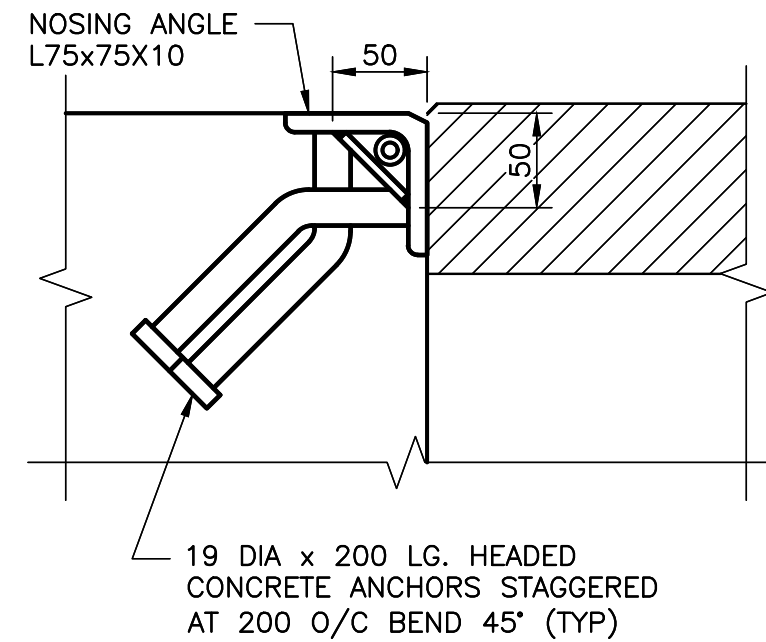
| | | | | | | | |
|------------------|----------|-----|-------------------|------|----------|-----------------|----------------|
| REVISIONS | - | - | - | - | - | - | - |
| | - | - | - | - | - | - | - |
| | - | - | - | - | - | - | - |
| | - | - | - | - | - | - | - |
| | 12/22/25 | BY | ISSUED FOR TENDER | | | | |
| | DATE | BY | DESCRIPTION | | | | |
| DESIGN | T.R. | CHK | D.B. | CODE | CHBDC-19 | LOAD CL-625-ONT | DATE NOV. 2025 |
| DRAWN | T.R. | CHK | D.B. | SITE | 06 | DWG | S06 |



2 (SEE DWGS. SS113-11)
(EXPANSION JOINT SEAL NOT SHOWN)



SETTING DEVICE AND BLOCKOUTS
SCALE 1:10



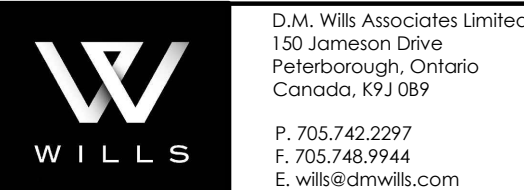
A **DETAIL**
SCALE 1:4

METRIC
DIMENSIONS ARE IN METRES AND/OR
MILLIMETRES UNLESS OTHERWISE SHOWN
DRAWING NOT TO BE SCALED
100mm ON ORIGINAL DRAWING

**CITY OF
TEMISKAMING SHORES**

**GOLF COURSE ROAD BRIDGE
REHABILITATION
STRIP SEAL EXPANSION JOINT
TYPE 'C' DETAILS**

**SHEET
07**



NOTES:

- FOR DETAILS OF REINFORCING IN EXPANSION JOINT BLOCKOUT, SEE DECK AND ABUTMENT REINFORCING DRAWINGS.
- HEADED CONCRETE ANCHORS IN NOSING ANGLES SHALL BE LOCATED WITHIN 75mm OF EITHER SIDE OF FIELD SPLICES.
- PROTECT INJECTION HOSE AND FITTINGS ADJACENT TO FIELD SPLICE DURING WELDING AND REMOVE PROTECTION PRIOR TO PLACING OF CONCRETE IN BLOCKOUT.
- THIS DRAWING TO BE READ IN CONJUNCTION WITH DRAWING SS113-11, AND MTD 3950.2000.
- LEGEND:
[] - DENOTES FASTENER SIZE IN INCHES.

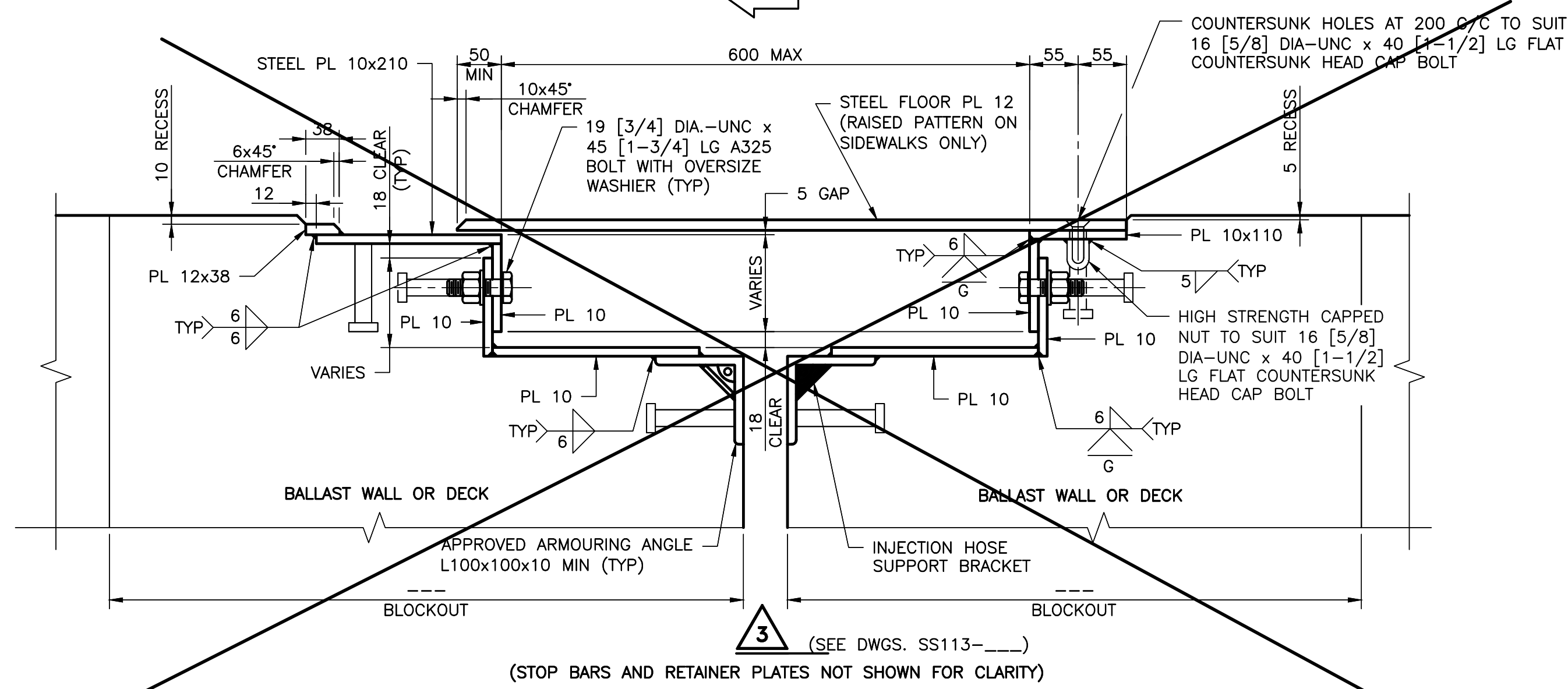
TABLE OF DESIGN REQUIREMENTS (TO BE FULLY COMPLETED BY DESIGNER)

| EXP. JOINT LOCATION | MTO GAP ** RATING (mm) | | DESIGN *** MOVEMENT | * "J" AT INSTALLATION TEMPERATURE (C) (mm) | | | | | | | | | |
|---------------------|------------------------|-----|---------------------|--|----|----|-----|-----|-----|-----|-----|--|--|
| | MIN | MAX | | -5° | 0° | 5° | 10° | 15° | 20° | 25° | 30° | | |
| WEST | 25 | 100 | 25 | 57 | 56 | 54 | 52 | 50 | 48 | 46 | 44 | | |
| EAST | 25 | 100 | 25 | 57 | 56 | 54 | 52 | 50 | 48 | 46 | 44 | | |

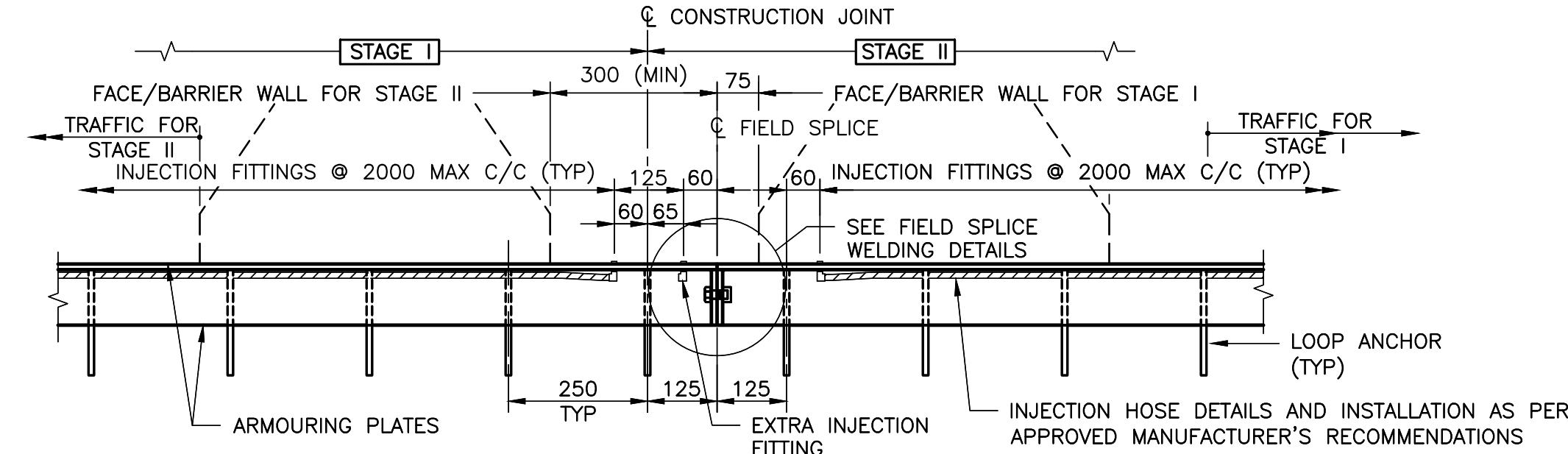
* DIMENSION 'J' MEASURED PERPENDICULAR TO CENTRELINE EXPANSION JOINT. WHERE MIN. AND MAX. FOR JOINT SUPPLIED DIFFER FROM THOSE SHOWN IN TABLE, 'J' DIMENSIONS SHALL BE REVISED BY CONTRACTOR AND SHOWN ON SHOP DRAWINGS. FOR STAGED CONSTRUCTION ON STRUCTURES OTHER THAN POST-TENSIONED, THE CONTRACTOR SHALL USE THE FIRST STAGE OBSERVED 'J' GAP TO INSTALL THE SECOND STAGE.

** MTO GAP, MEASURED BETWEEN PROJECTING FACES OF STOP BARS, IS TAKEN FROM DSM 9.40.27, TYPE "C".

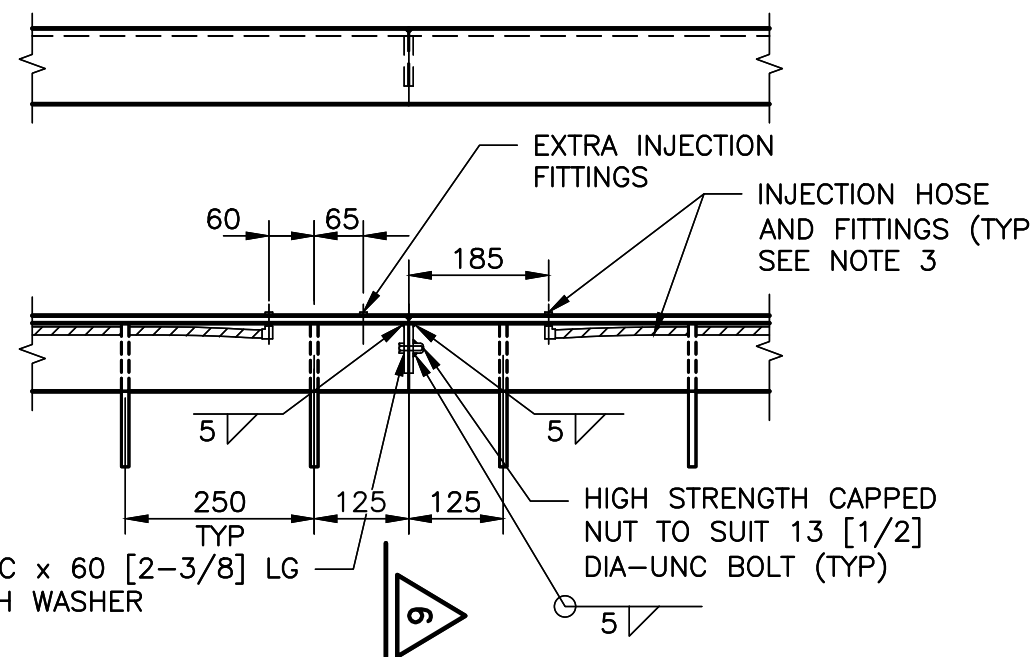
*** CALCULATED TOTAL MOVEMENT AT SLS OCCURRING AFTER TIME OF JOINT INSTALLATION. (MEASURED PARALLEL TO CENTRELINE OF STRUCTURE)



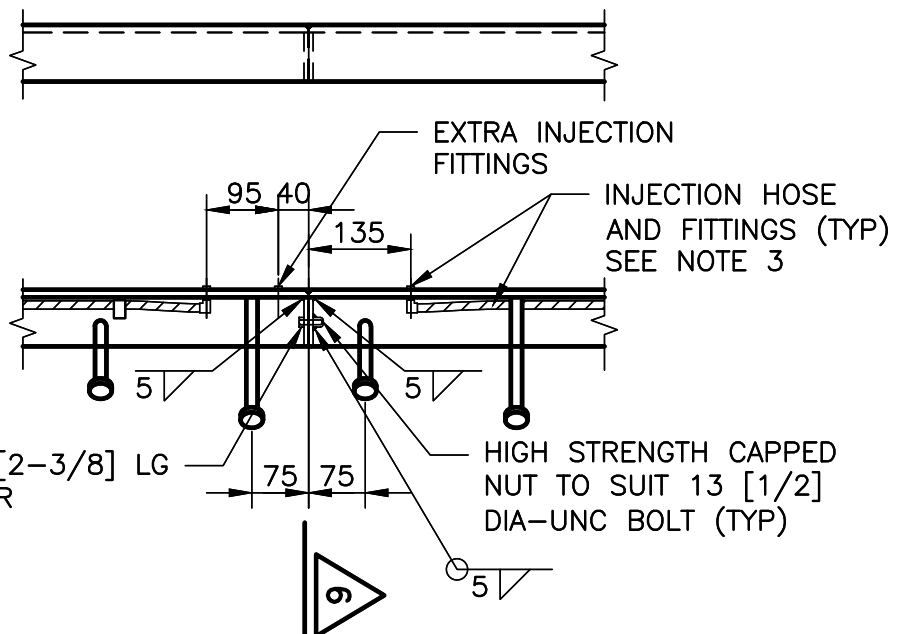
**FIELD SPLICE DETAILS AT STAGED CONSTRUCTION
FOR ARMOURING ANGLE**
SCALE 1:10



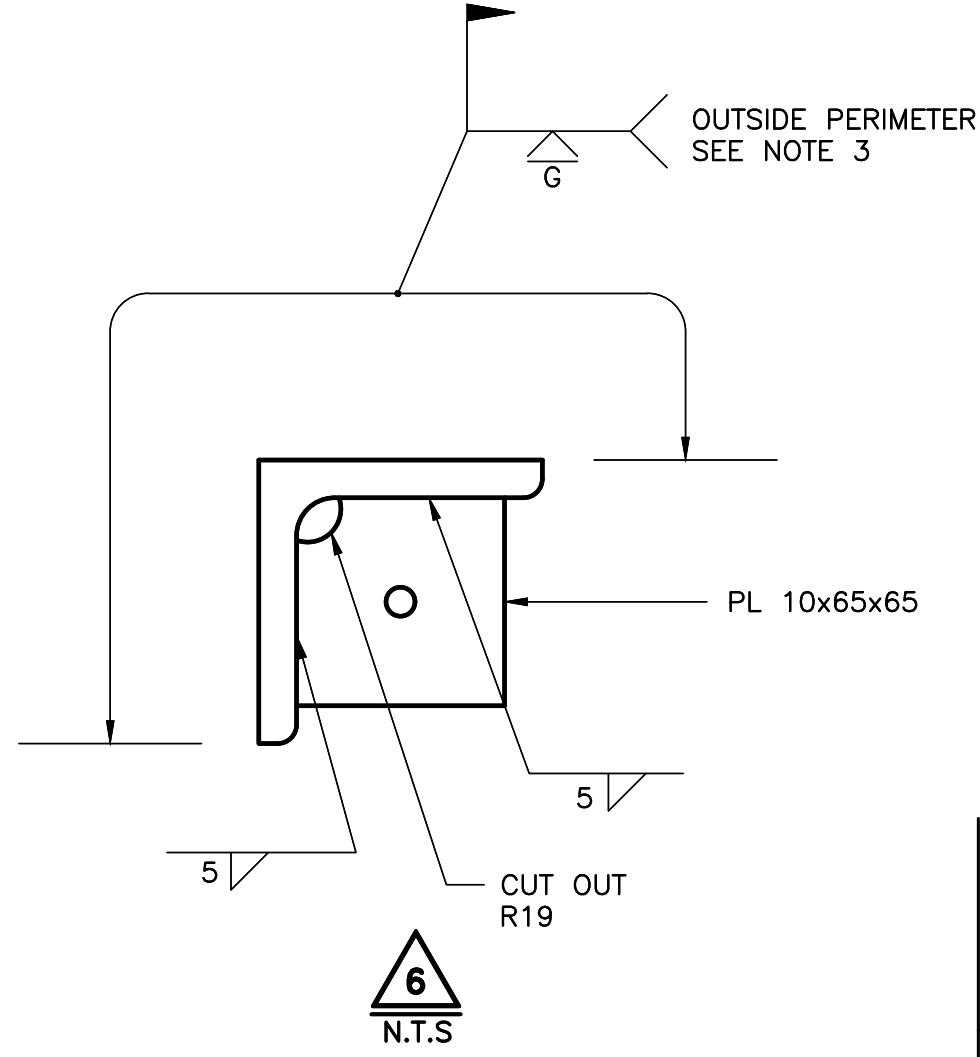
**FIELD SPLICE DETAILS AT STAGED CONSTRUCTION
FOR NOSING ANGLE**
SCALE 1:10



**ARMOURING ANGLE
FIELD SPLICE DETAIL**
SCALE 1:10



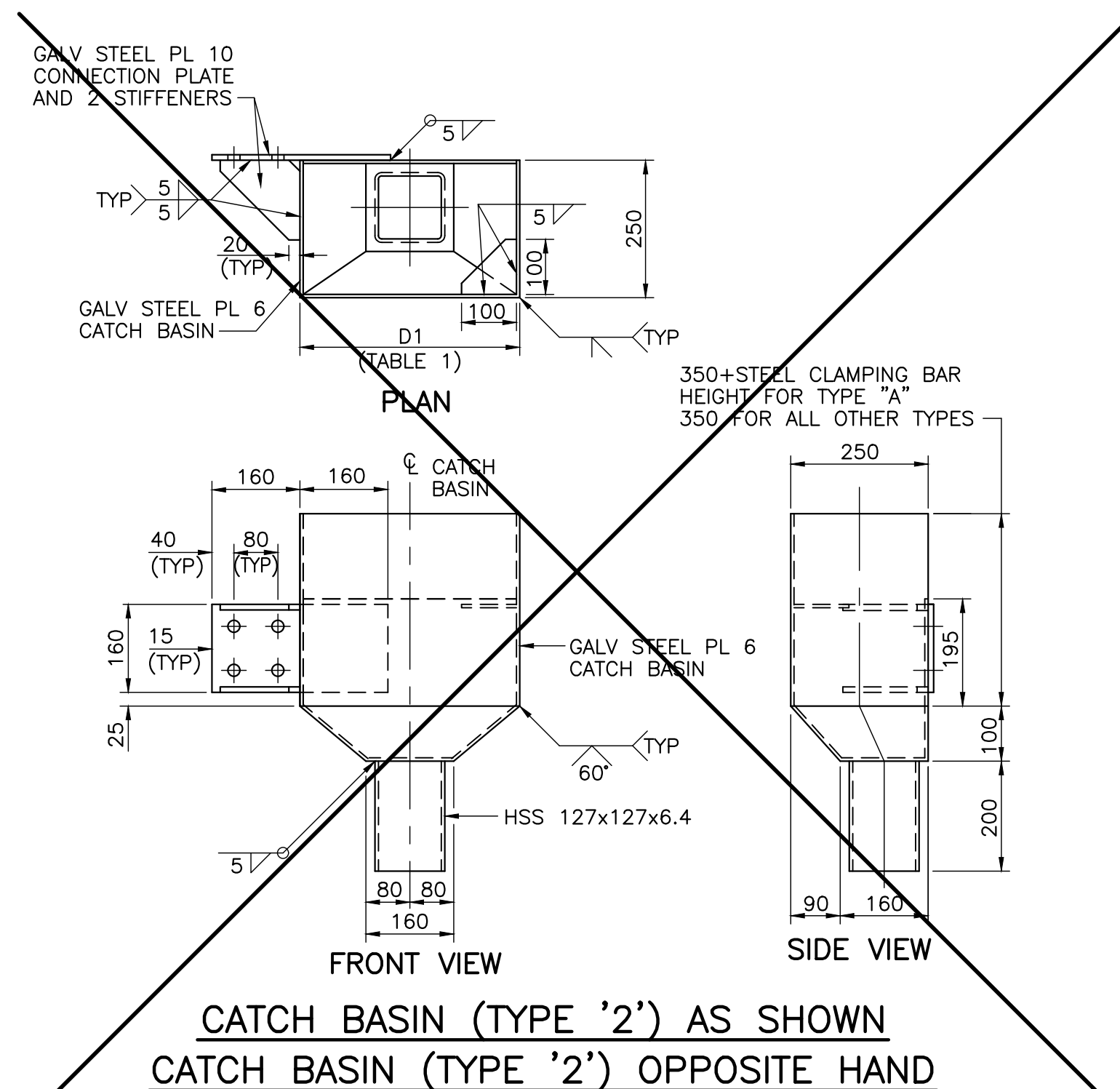
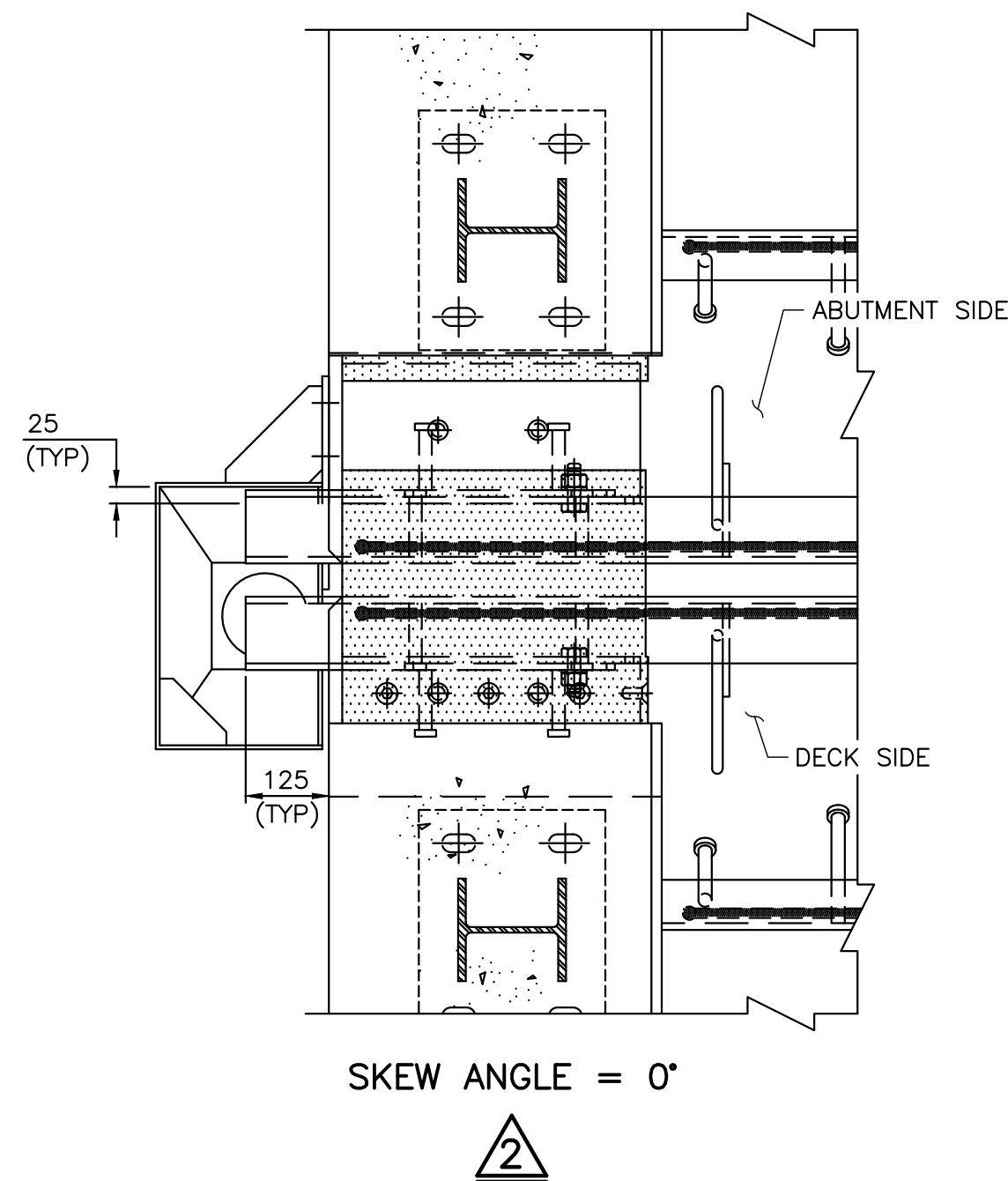
**NOSING ANGLE
FIELD SPLICE DETAIL**
SCALE 1:10



6
N.T.S.

STANDARD DRAWING
JANUARY 2023
SS113-13
**STRIP SEAL EXPANSION JOINT
TYPE "C" DETAILS**

| REVISIONS | DATE | | BY | | DESCRIPTION | |
|-----------|----------|-----|------|------|-------------------|-----------------|
| | DATE | BY | DATE | BY | DESCRIPTION | |
| - | - | - | - | - | - | - |
| - | - | - | - | - | - | - |
| - | - | - | - | - | - | - |
| 12/22/25 | 12/22/25 | MY | | | ISSUED FOR TENDER | |
| DESIGN | TR | CHK | DB | CODE | CHBDC-19 | LOAD CL-625-ONT |
| DRAWN | JAH | CHK | TR | SITE | 06 | DWG |



| LOCATION | D1 (mm) | D2 (mm) |
|-------------|---------|---------|
| NE QUADRANT | TABLE 1 | ±3650 |
| SE QUADRANT | TABLE 1 | ±3650 |
| SW QUADRANT | TABLE 1 | ±3650 |
| NW QUADRANT | TABLE 1 | ±3650 |

(PLOUGH GUARD AND CLAMPING BAR FOR TYPE "A" NOT SHOWN)

The image contains three technical drawings. The top left drawing is for 'TYPE '1'' and shows a circular cross-section of a pipe with a diameter of 168.3 x 7.11. It features a 24 x 50 slotted hole, a heavy hex nut and structural washer, and a threaded stud welded to the pipe. The assembly is secured with 4 M16 adhesive anchors and an L 200x200x10 185 LG bracket. The top right drawing is for 'TYPE '2'' and shows a square cross-section of an HSS 152x152x6.4. It also features a 24 x 50 slotted hole, a heavy hex nut and structural washer, and a threaded stud welded to the pipe. The assembly is secured with 4 M16 adhesive anchors and an L 200x200x10 185 LG bracket. The bottom drawing is a side view of the assembly, showing the front face of the abutment wall of the post-tensioned structure. It includes dimensions for the height of the structure (700 MAX), the distance from the top to the first anchor (30), the distance between anchors (125), the distance from the bottom to the first anchor (80 MIN), and the distance from the bottom to the second anchor (40). The drawing also shows the 2-22 [7/8] DIA ASTM A325 c/w matching heavy hex nut and washer, each bolt spaced at 125, and the 2-24 DIA HOLES FOR 22 [7/8] DIA BOLTS. The assembly is secured with 4 M16 adhesive anchors and an L 200x100x10 185 LG bracket.

TYPE '1'

TYPE '2'

TYPE 'A'

1. PIPE SHALL BE IN ACCORDANCE WITH ASTM A53 GRADE B.
2. HSS SHALL BE GRADE 350W. STEEL PLATE GRADE 350W MAY BE USED AS AN ALTERNATIVE TO HSS, PROVIDED THAT SECTIONS ARE FABRICATED USING FULL PENETRATION WELDS.
3. STEEL SHALL BE GRADE 300W UNLESS NOTED OTHERWISE.
4. THREADED STUDS SHALL BE IN ACCORDANCE WITH ASTM SPECIFICATION A108 AND CSA W59-13, USING FUSION WELD OR SHIELDED METAL ARC WELDING PROCESS.
5. ALL COMPONENTS, INCLUDING ALL CONNECTORS, SHALL BE HOT DIP GALVANIZED AFTER FABRICATION.
6. CATCH BASIN AND DOWNPIPE SHALL BE CONNECTED TO CONCRETE USING ADHESIVE ANCHORS. THEY SHALL BE EQUIVALENT TO ASTM A325M, SIZE M16, WITH A MINIMUM EMBEDMENT LENGTH OF 100mm.
7. ADHESIVE ANCHOR INSTALLATION TO BE DONE ACCORDING TO MANUFACTURER'S RECOMMENDATIONS.
8. DETAILS OF CATCH BASIN ARE APPROPRIATE AND THE SIZE ADEQUATE FOR BRIDGES WITH ANY SKEW.
9. THIS DRAWING TO BE READ IN CONJUNCTION WITH DRAWING SS113-11
10. FOR REHABILITATION CONTRACTS, DIMENSION D2 TO BE VERIFIED IN THE FIELD BY THE CONTRACTOR AND SHOWN ON THE SHOP DRAWINGS.
11. LEGEND: [] DENOTES FASTENER SIZE IN INCHES.

FILE NAME: Y:\9200 - 9299\9288 - Temiskaming - Golf Course Rd. Bridge\02 Drawings\Current Drawings\9288 - 12 - Sequence of exp.jnt. install (113-38).dwg
CREATED: 2025-11-06
MODIFIED: 2025-11-06

D.M. WILLS ASSOCIATES LIMITED

ANS-B

2019-11

METRIC
DIMENSIONS ARE IN METRES AND/OR
MILLIMETRES UNLESS OTHERWISE SHOWN
DRAWING NOT TO BE SCALED
100mm ON ORIGINAL DRAWING

**CITY OF
TEMISKAMING SHORES**

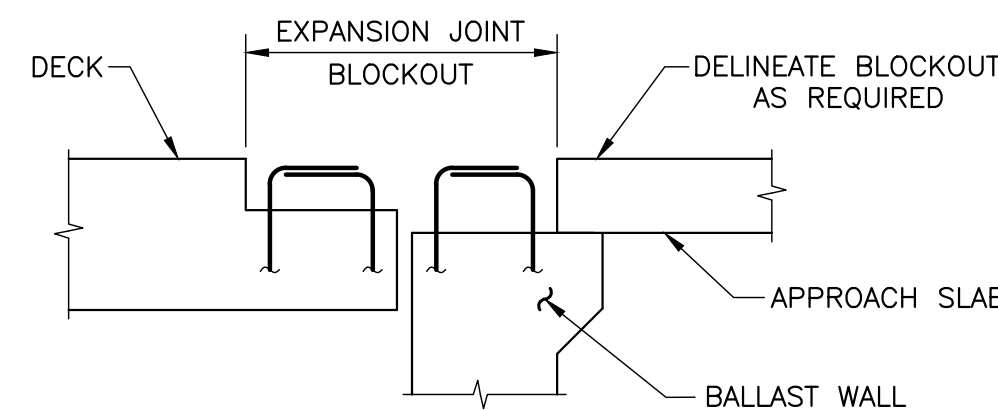
**GOLF COURSE ROAD BRIDGE
REHABILITATION
SEQUENCE OF EXPANSION JOINT
INSTALLATION**

**SHEET
11**

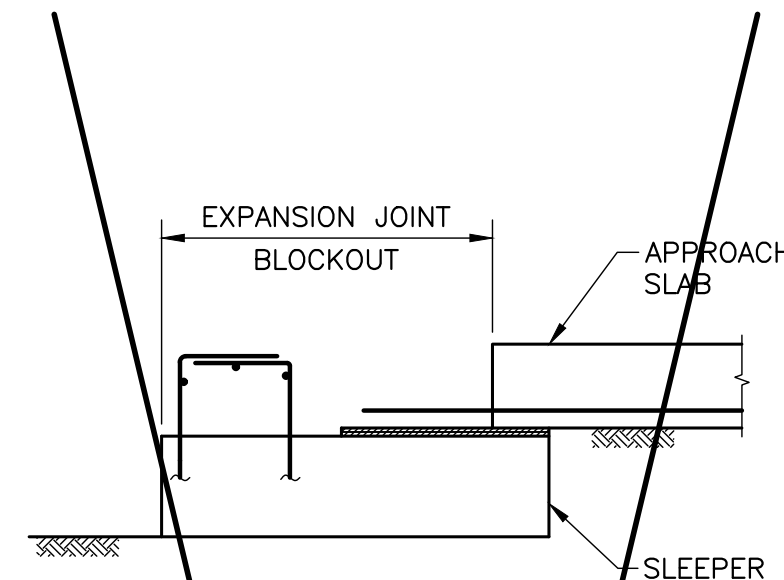
WILLS
D.M. Wills Associates Limited
130 Jameson Drive
Pelletborough, Ontario
Canada, K9J 0B9
P. 705.742.2297
F. 705.748.9944
E. wills@dmwills.com

NOTES:

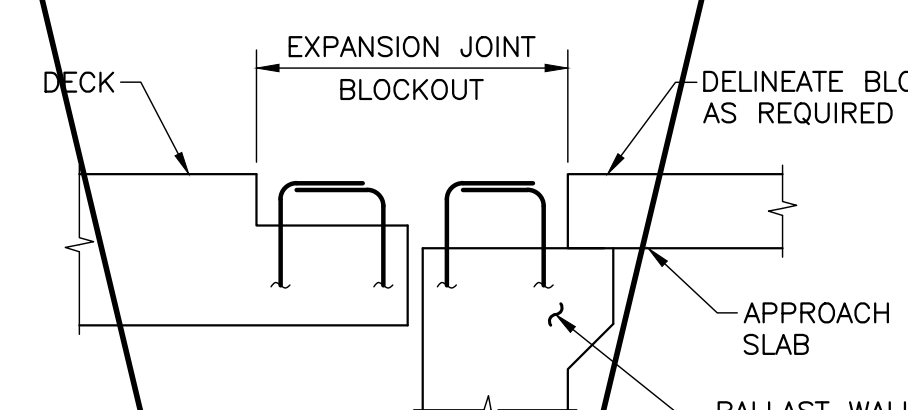
1. THE PURPOSE OF THIS DRAWING IS TO SHOW SCHEMATICALLY THE EXPANSION JOINT CONSTRUCTION SEQUENCE.
2. THIS DRAWING IS TO BE READ IN CONJUNCTION WITH THE EXPANSION JOINT DRAWINGS AND SPECIFICATIONS.
3. REINFORCING STEEL AND JOINT HARDWARE SHOWN ARE SCHEMATIC ONLY AND ARE AS SPECIFIED ELSEWHERE.
4. CONTRACTOR SHALL ENSURE THAT ALL REINFORCEMENT IN THE BLOCKOUT IS NOT DAMAGED.
5. CONTRACTOR SHALL PROVIDE ASPHALT RAMPING C/W BOND BREAKER AT CONCRETE END DAMS AS REQUIRED BETWEEN STAGES PRIOR TO SURFACE COURSE PAVING.



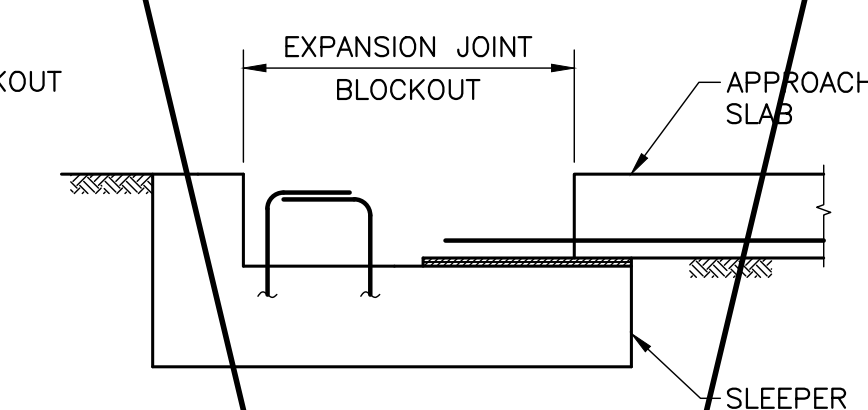
1. FORM THE BLOCKOUT



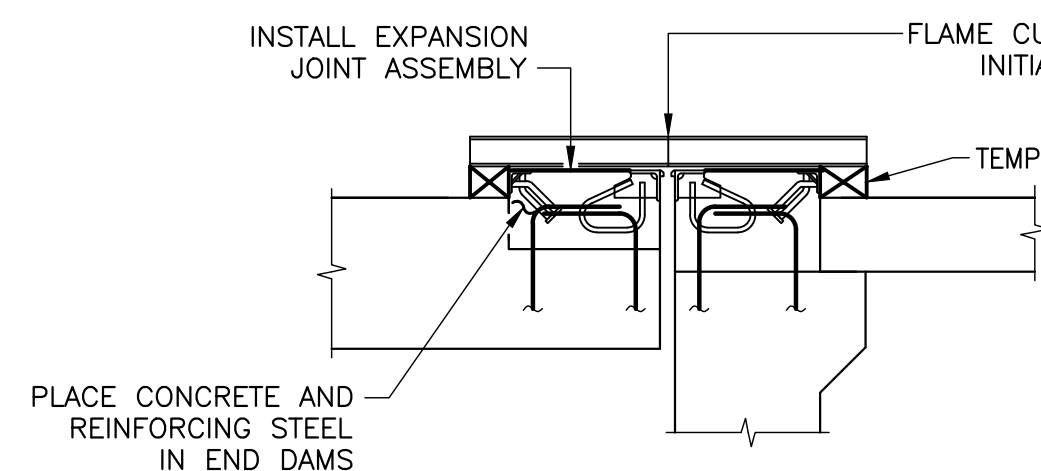
1. FORM THE BLOCKOUT



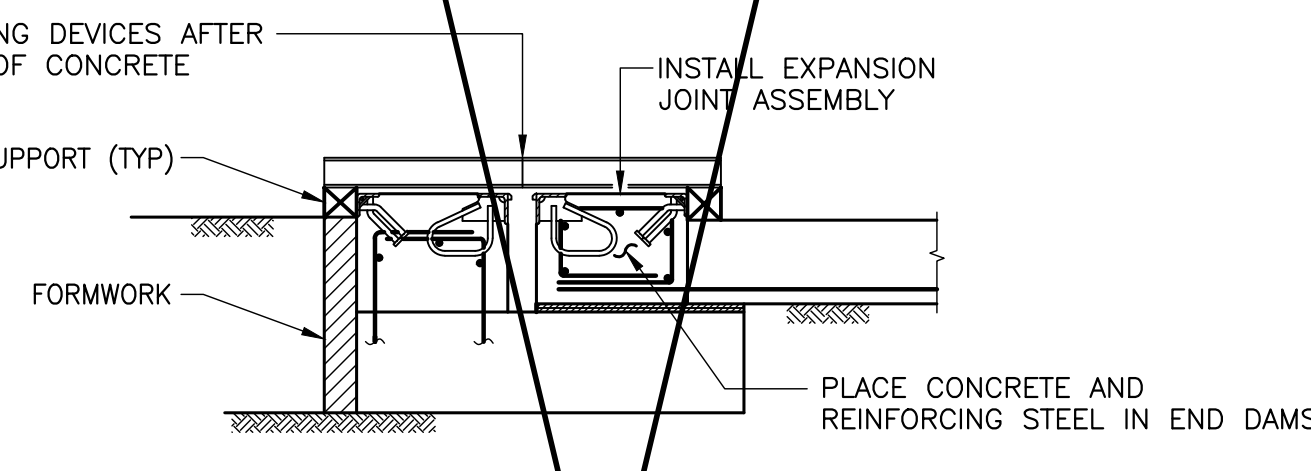
1. FORM THE BLOCKOUT



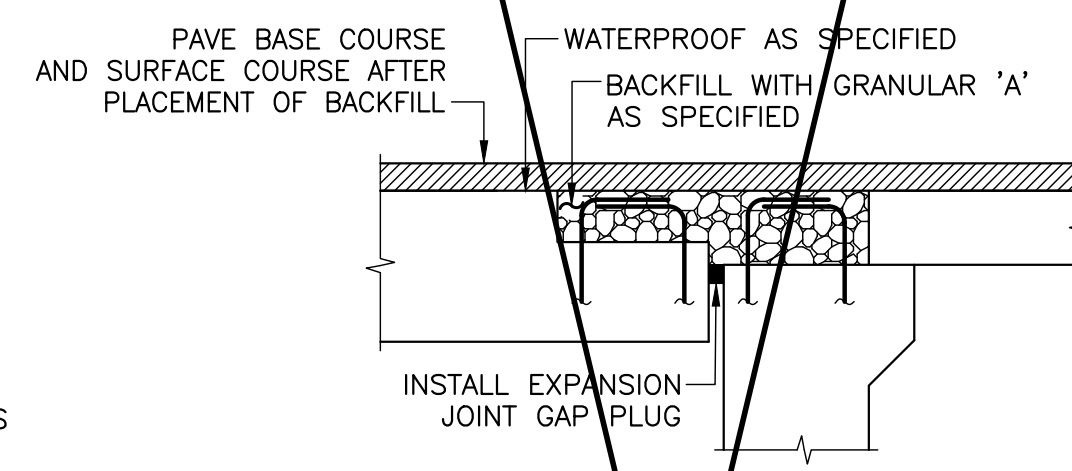
1. FORM THE BLOCKOUT



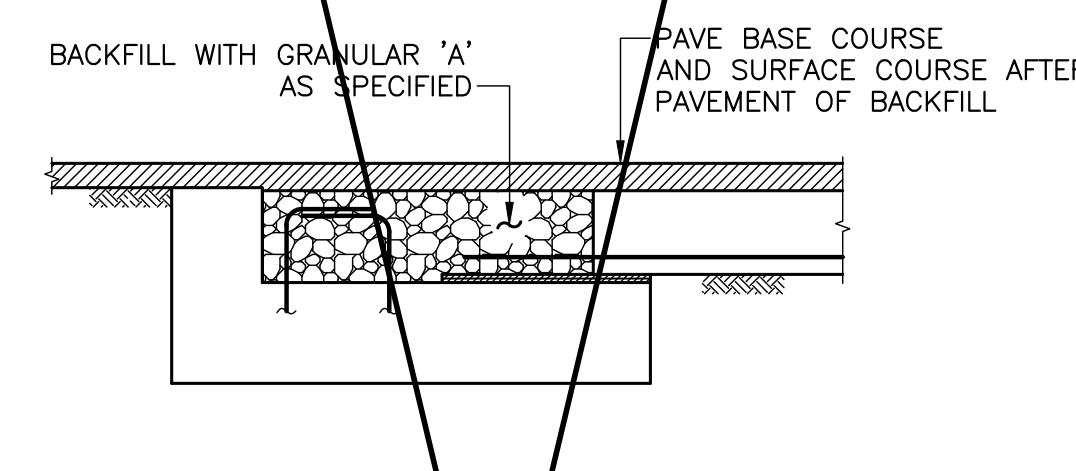
2. INSTALL THE EXPANSION JOINT



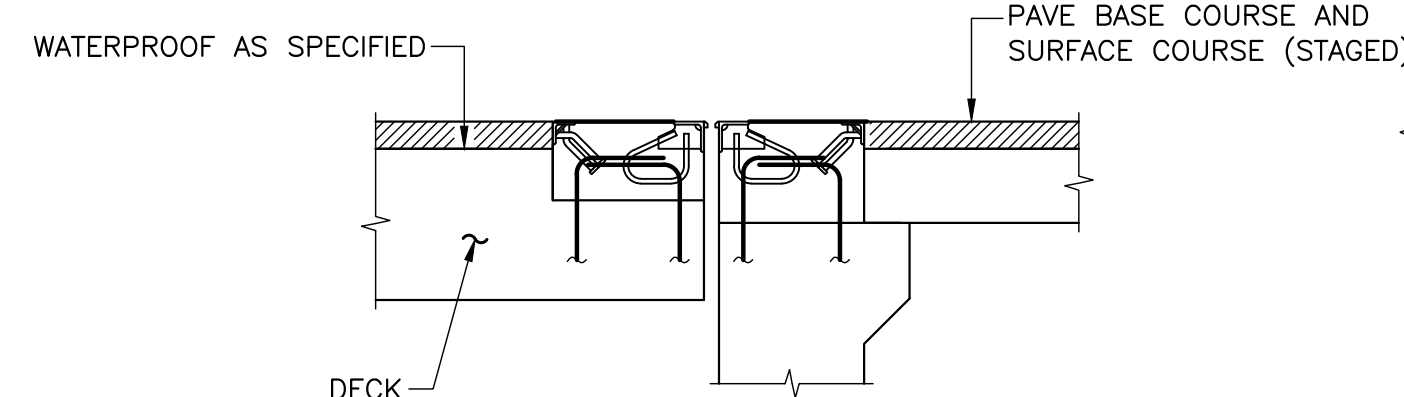
2. INSTALL THE EXPANSION JOINT



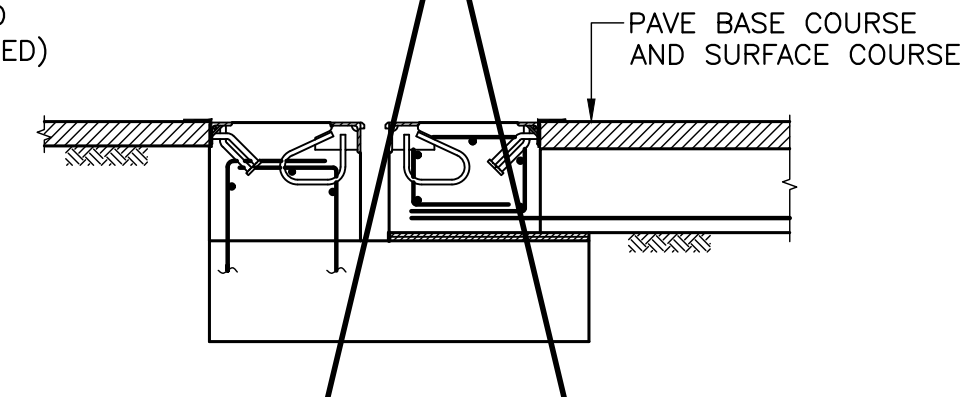
2. BACKFILL AND PAVE OVER BLOCKOUT



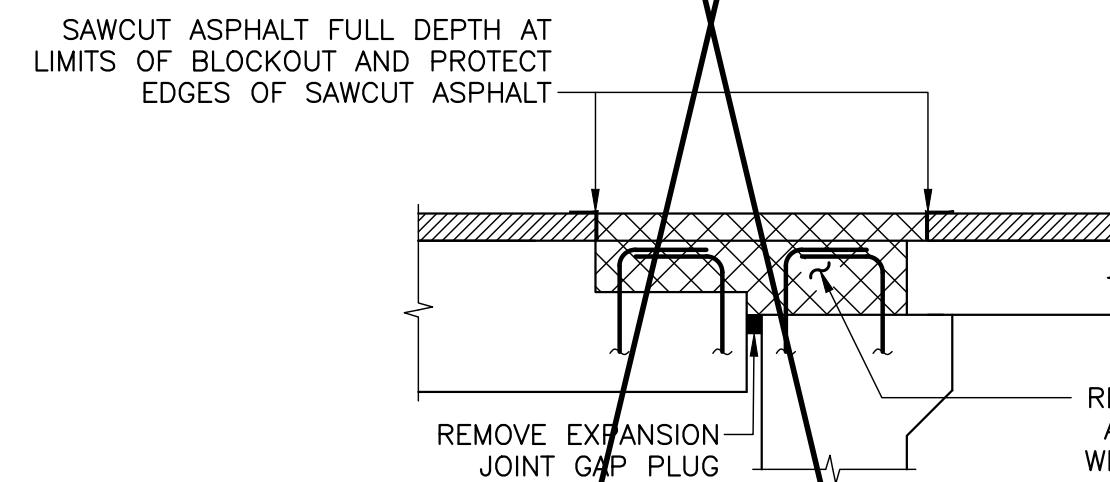
2. BACKFILL AND PAVE OVER BLOCKOUT



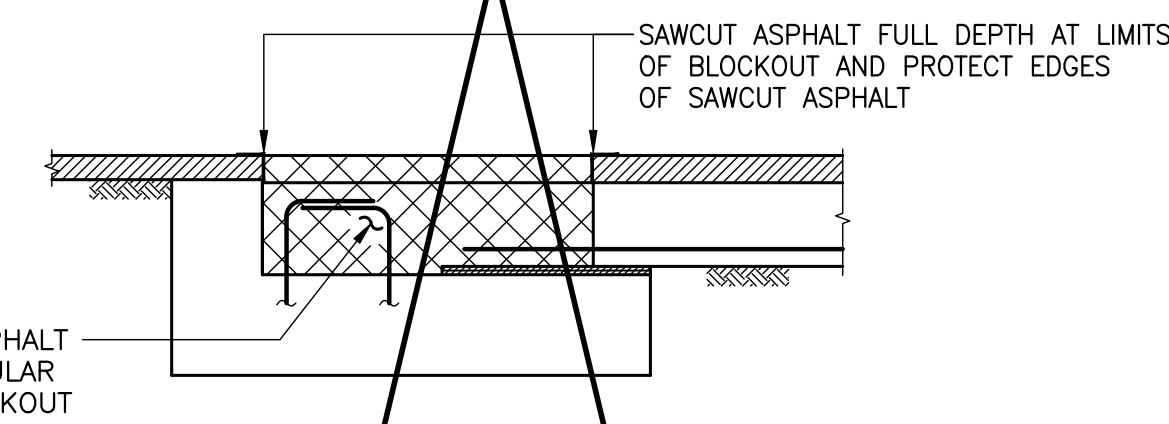
3. INSTALL THE WATERPROOFING AND PAVEMENT



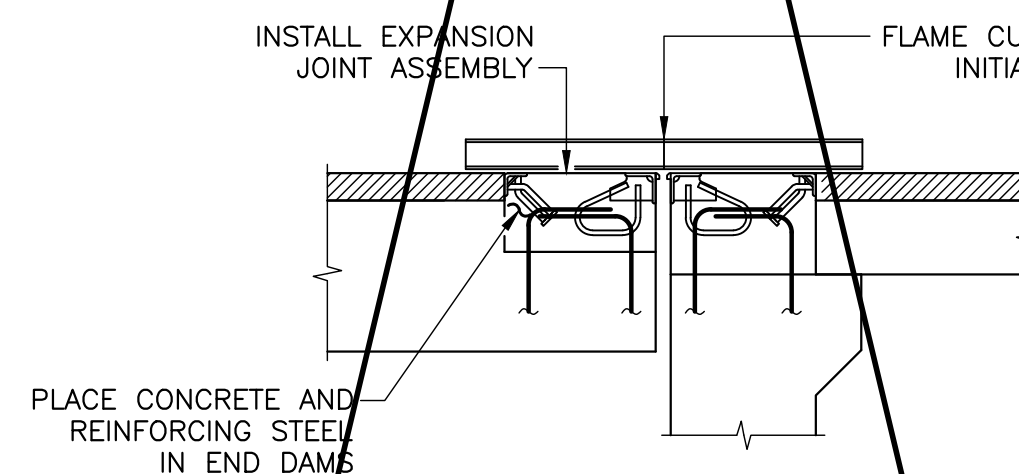
3. INSTALL THE WATERPROOFING AND PAVEMENT



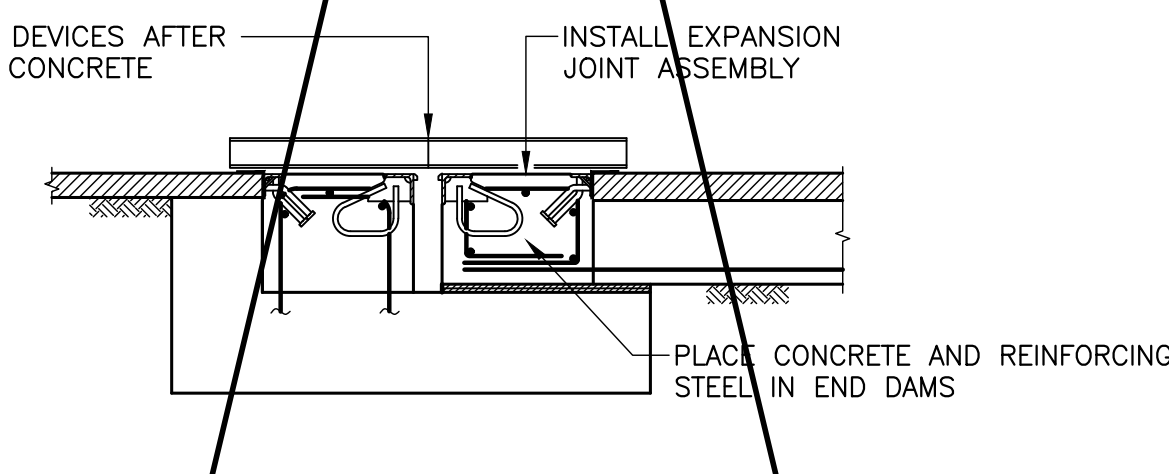
3. PREPARE BLOCKOUT FOR EXPANSION JOINT



3. PREPARE BLOCKOUT FOR EXPANSION JOINT



4. INSTALL THE EXPANSION JOINT



4. INSTALL THE EXPANSION JOINT

AT BRIDGE DECK

AT SLEEPER SLAB

INSTALLATION BEFORE PAVING

AT BRIDGE DECK

AT SLEEPER SLAB

INSTALLATION AFTER PAVING

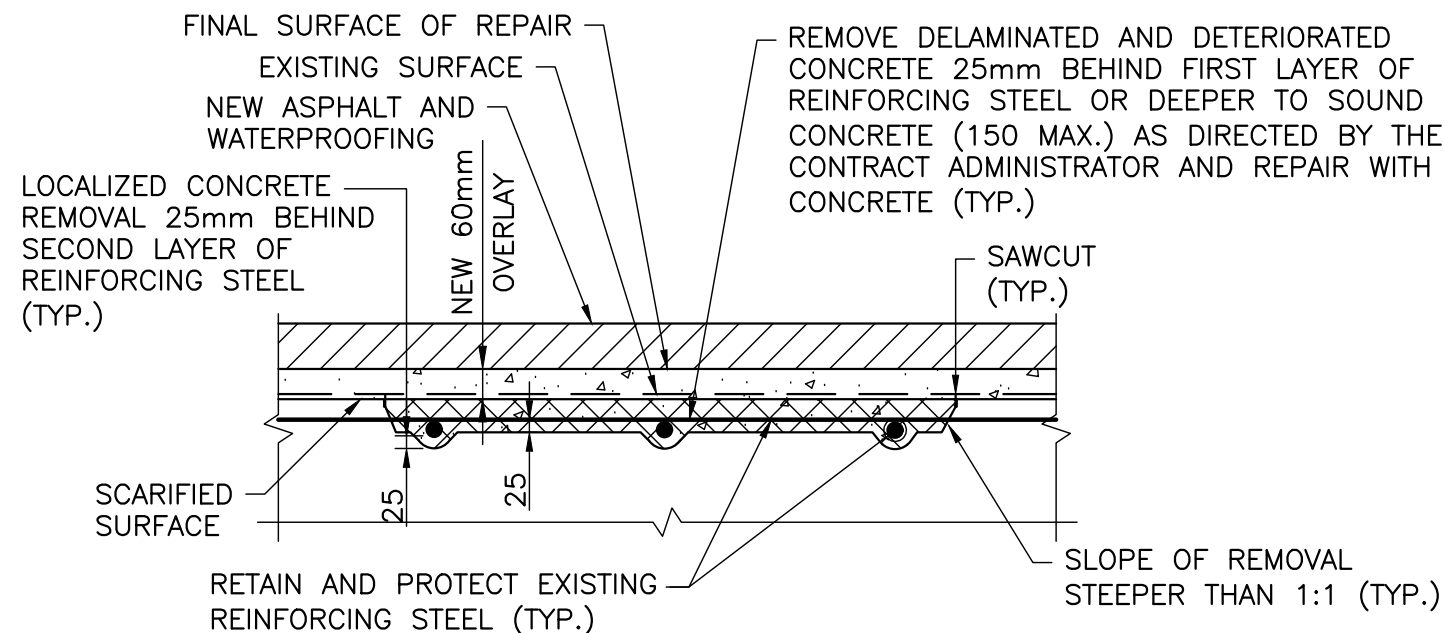
STANDARD DRAWING
MAY 2018

SEQUENCE OF EXPANSION JOINT INSTALLATION

MODIFIED

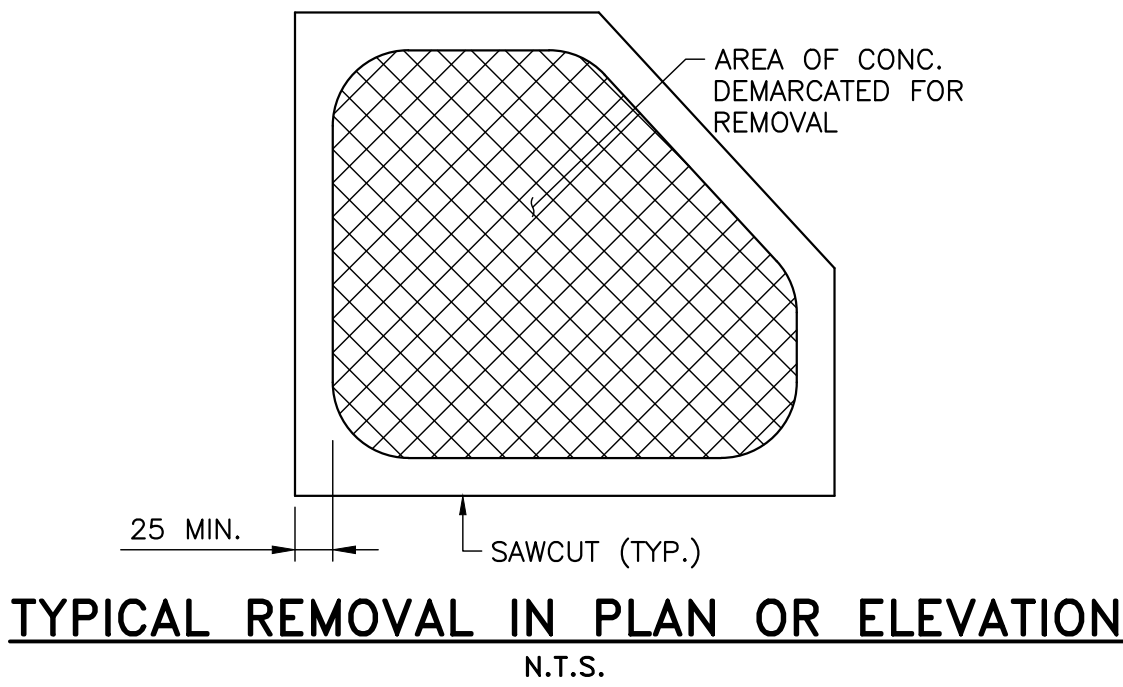
SS113-38

| REVISIONS | | DATE | BY | DESCRIPTION |
|-----------|----------|-----------|----------|-------------------|
| - | - | - | - | - |
| - | - | - | - | - |
| - | - | - | - | - |
| 12/22/25 | MV | | | ISSUED FOR TENDER |
| DESIGN | T.R. CHK | D.B. CODE | CHBDC-19 | LOAD CL-625-ONT |
| DRAWN | T.R. CHK | D.B. SITE | 06 | DWG S14 |



NOTE:
CONCRETE IN REPAIR AREA TO BE
PLACED SIMULTANEOUSLY WITH OVERLAY.

**TYPICAL TYPE 'A' LOCAL CONCRETE
REMOVAL AND REPAIR DETAIL**
N.T.S.



TYPICAL REMOVAL IN PLAN OR ELEVATION
N.T.S.

METRIC
DIMENSIONS ARE IN METRES AND/OR
MILLIMETRES UNLESS OTHERWISE SHOWN
DRAWING NOT TO BE SCALED
100mm ON ORIGINAL DRAWING

LEGEND:

- REMOVALS
 NEW CONCRETE

**CITY OF
TEMISKAMING SHORES**

**GOLF COURSE ROAD BRIDGE
REHABILITATION
TYPICAL DETAILS**

**SHEET
12**

WILLS
D.M. Wills Associates Limited
130 Jameson Drive
Pelletborough, Ontario
Canada, K9J 0B9
P. 705.742.2297
F. 705.748.9944
E. wills@dmwills.com

NOTES:

1. THIS DRAWING SHALL BE READ IN CONJUNCTION WITH ALL OTHER
APPLICABLE CONTRACT DRAWINGS.

STANDARD 90° HOOK

STANDARD 180° HOOK

MINIMUM BENDING PIN DIAMETER, D, mm

| BAR SIZE | STEEL GRADE | |
|----------|---------------------|--------------|
| | 400R ⁽²⁾ | 400W OR 500W |
| 10M | 70 | 60 |
| 15M | 100 | 90 |
| 20M | 120 | 100 |
| 25M | 150 | 150 |
| 30M | 250 | 200 |
| 35M | 300 | 250 |
| 45M | 450 ⁽¹⁾ | 400 |
| 55M | 600 ⁽¹⁾ | 550 |

(1) Special fabrication is required for bends exceeding 90° for bars of these sizes and grade.
 (2) For stainless steel, with $F_y = 500$, the same D as for 400R.

STANDARD HOOK DIMENSIONS

| BAR SIZE | 90° HOOKS | | 180° HOOKS | | | |
|----------|-------------|--------------|-------------|--------------|--------|--------------|
| | A OR G (mm) | | A OR G (mm) | | J (mm) | |
| | 400R | 400W OR 500W | 400R | 400W OR 500W | 400R | 400W OR 500W |
| 10M | 180 | 180 | 140 | 130 | 90 | 80 |
| 15M | 260 | 250 | 180 | 170 | 130 | 120 |
| 20M | 310 | 300 | 220 | 200 | 160 | 140 |
| 25M | 400 | 400 | 280 | 280 | 200 | 200 |
| 30M | 510 | 490 | 400 | 350 | 310 | 260 |
| 35M | 610 | 590 | 480 | 430 | 370 | 320 |
| 45M | 790 | 770 | 680 | 630 | 540 | 490 |
| 55M | 1030 | 1010 | 900 | 850 | 710 | 660 |

NOTE: All Hook Dimensions are according to the CHBDC-2019.

MINIMUM STIRRUP AND TIE HOOK DIMENSIONS

| BAR SIZE | BAR DIAM. d_b (mm) | PIN DIAM. D (mm) | 90° | 135° | H (approx.) (mm) |
|----------|----------------------|------------------|-------------|-------------|------------------|
| | | | A OR G (mm) | A OR G (mm) | |
| 10M | 11.3 | 45 | 100 | 100 | 70 |
| 15M | 16.0 | 65 | 140 | 140 | 100 |
| 20M | 19.5 | 100 | 190 | 190 | 115 |
| 25M | 25.2 | 150 | 280 | | |

MIN. 90° HOOK

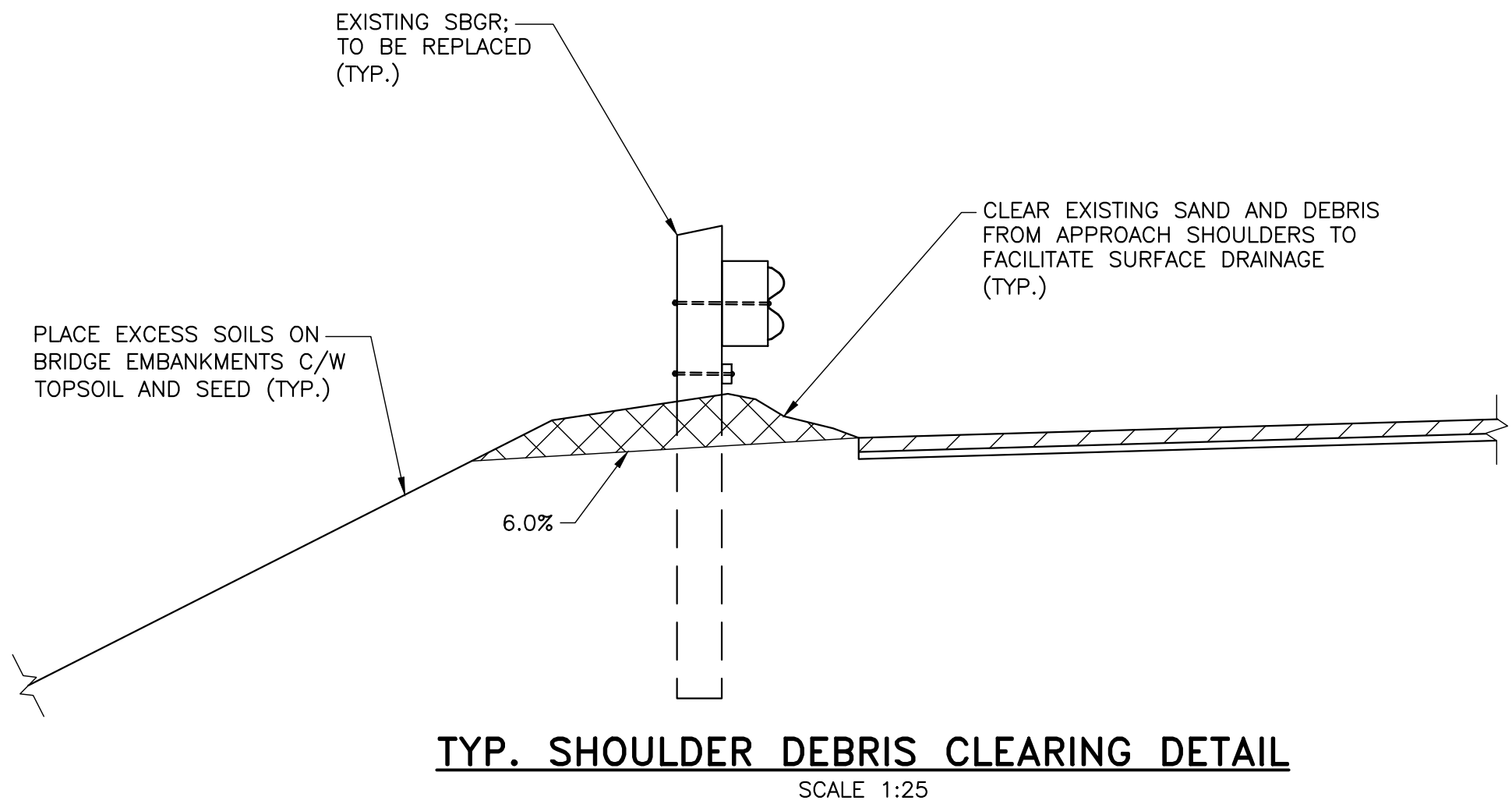
MIN. 135° HOOK

HOOK DIMENSIONS
FOR REINFORCING STEEL BARS

Ontario Ministry of Transportation

SS112-1

Date OCTOBER 2022 Rev -



TYP. SHOULDER DEBRIS CLEARING DETAIL
SCALE 1:25

| | | | | | | | |
|-----------|----------|-----|-------------------|------|----------|-----------------|----------------|
| REVISIONS | - | - | | | | | - |
| | - | - | | | | | - |
| | - | - | | | | | - |
| | - | - | | | | | - |
| | 12/22/25 | MV | | | | | |
| | DATE | BY | ISSUED FOR TENDER | | | | |
| | | | DESCRIPTION | | | | |
| DESIGN | T.R. | CHK | D.B. | CODE | CHBDC-19 | LOAD CL-625-ONT | DATE NOV. 2025 |
| DRAWN | T.R. | CHK | D.B. | SITE | 06 | DWG | S16 |